

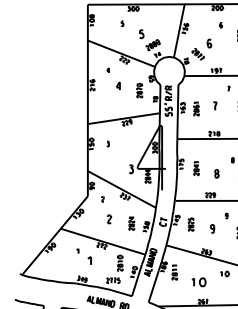
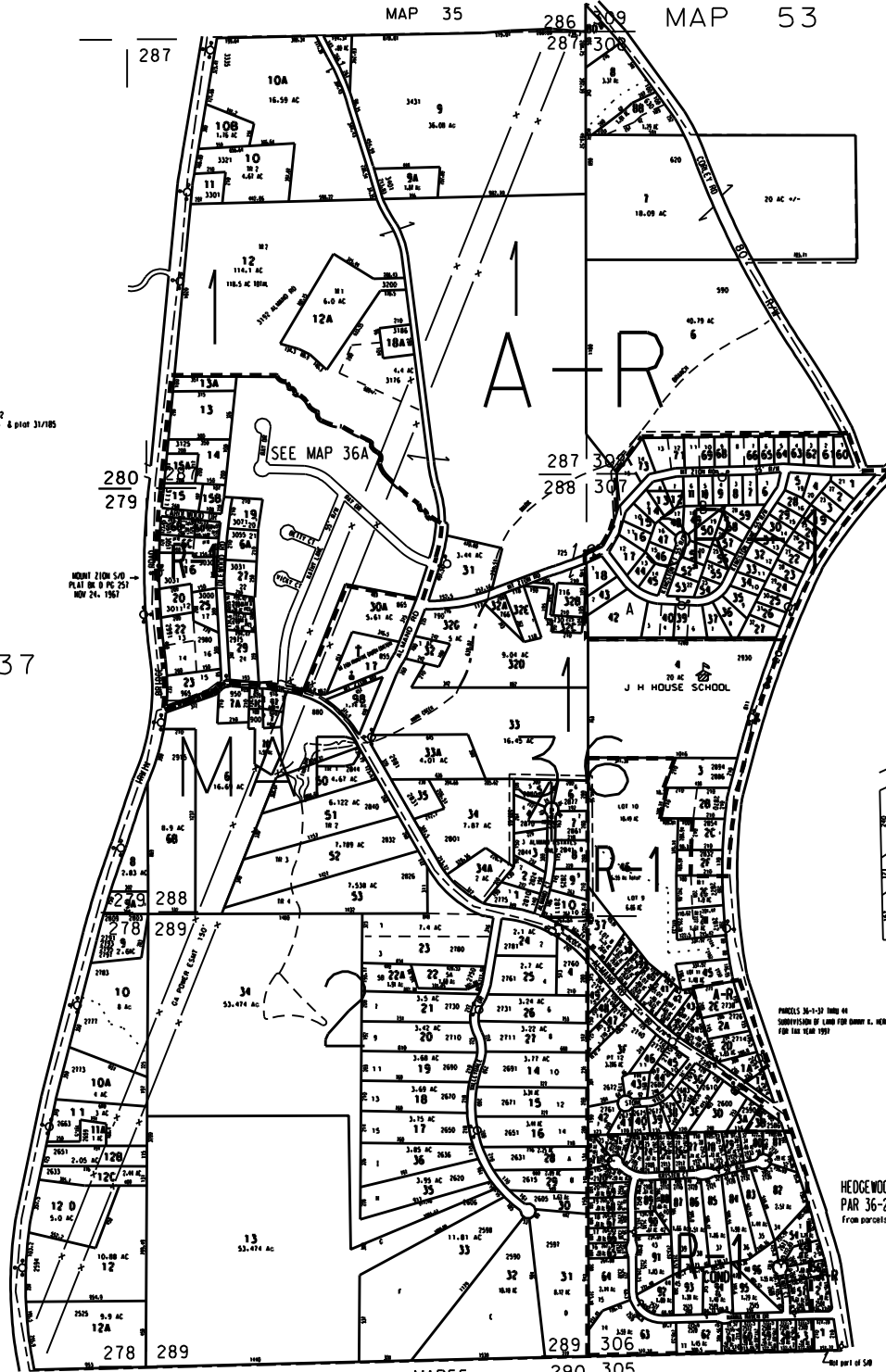
THIS MAP HAS BEEN COMPILED FROM THE MOST AUTHENTIC INFORMATION AVAILABLE, AND NEITHER ROCKDALE COUNTY NOR HUNNICUTT AND ASSOCIATES, INC. ASSUME RESPONSIBILITY FOR ERRORS OR OMISSIONS

NOTES:

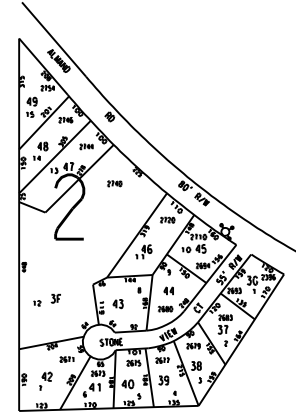
1. PARCEL 36-1-2H FROM 36-1-2C FOR 1999 PER DEED 1566/140 8-28-98 (US 11-20-98)
2. PARCEL 36-1-2BA FROM 36-1-2B FOR 1999 PER DEED 1482/163 3-16-98 (C.D. 1585/25, 9-25-98) (US 12-3-98)
3. 0.056 ac from 36-2-3 to 36-2-3B (deed 2634/261 3/13/02)
4. 1.87 ac from 36-1-9 to 36-1-9B (deed 3755/343 6/18/03 & plat 31/105)
5. 36-1-9C combined with 36-1-9B by owner's request 2004

MAP 37

MAP 35 286 287 288 289 MAP 53

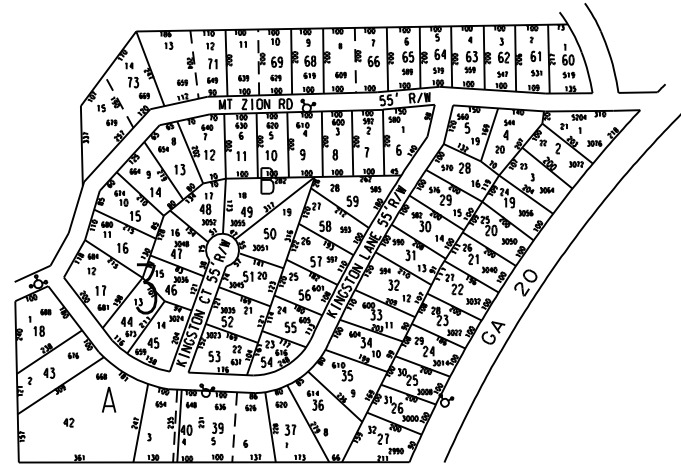


ALMOND ESTATES PH 1 1973  
BLOCK 4 ZONED A-R



STONE VIEW ACRES 1972  
BLOCK 2

SCALE OF INSERTS = 2 X MAP SCALE



KINGSTON WOODS PH 1 1970  
PH 2 1970  
PH 3 1979  
KINGSTON WOODS ONLY BLOCK 3

MAP 54

MT ZION S/D SECTION 2 1969 (PAR 13 - 29 BL 1)  
VALLEYDALE S/D PH 1 1970 (PAR 4, 14 - 36 BL 2 & 36 BL 1)

HEDGEWOOD S/D 2003 renamed from Hanna Haven S/D  
PAR 36-2-2, 36-2-3, 36-2-54 THRU 96  
From parcels 36-2-2 & 36-2-3

LEGEND

- County Boundary
- Map Boundary
- Limit of Ownership
- Original Platted Line
- District Line
- Railroad Right of Way
- City Limits
- Comment
- Stream
- CHURCH
- SCHOOL
- CENTERY

TAX VALUATION MAP		LAND LOT 287 - 389	MAP NO.
ROCKDALE COUNTY		305 - 305.27E, 27E	36
GEORGIA		DISTRICT 16	
		C. M. O. 435	
DATE: DEC. 1, 1987	LAST REVISION: 2004	PHOTO NO. BSE 120	1" = 1" 400'