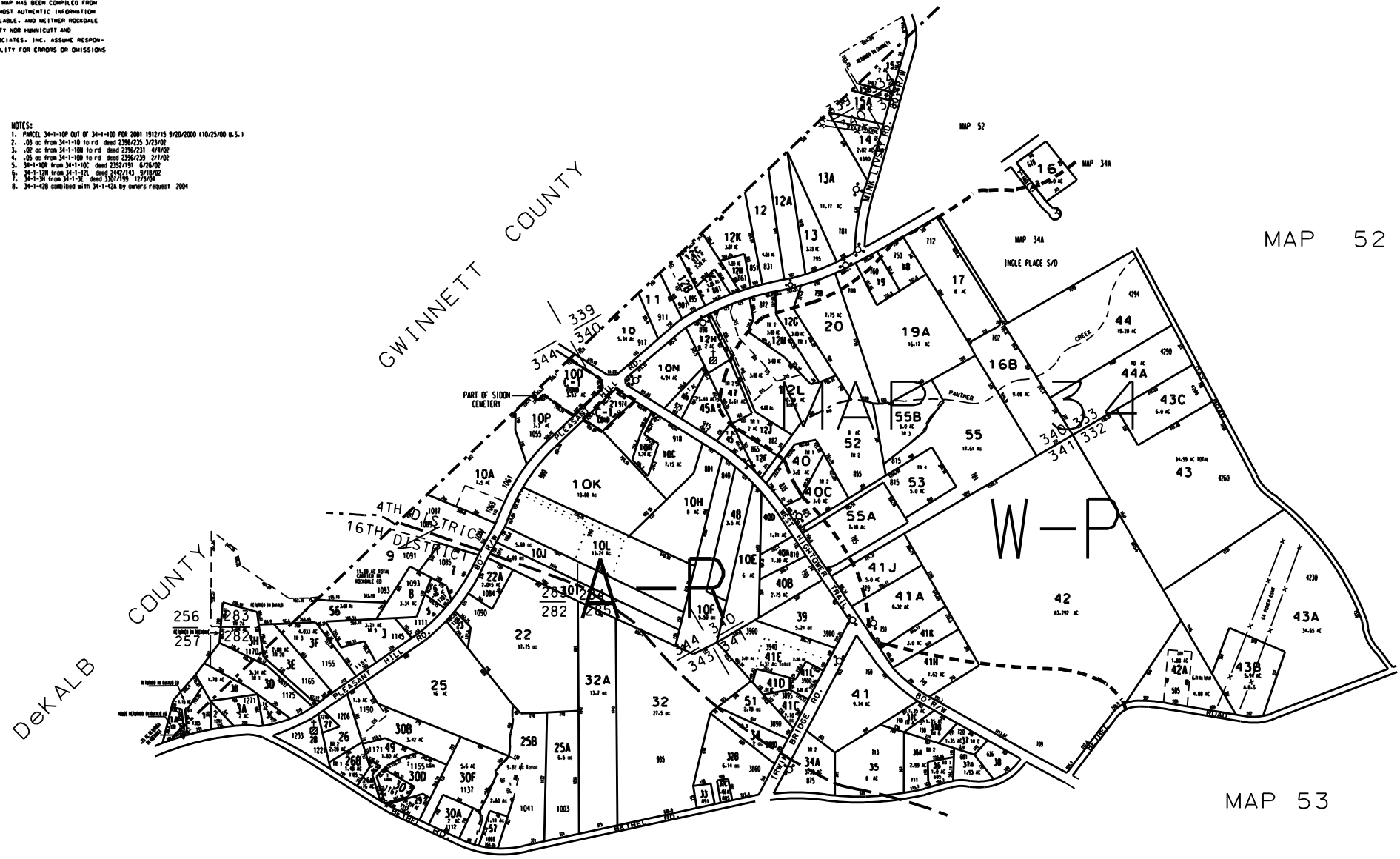


THIS MAP HAS BEEN COMPILED FROM THE MOST AUTHENTIC INFORMATION AVAILABLE, AND NEITHER ROCKDALE COUNTY NOR MUNICIPALITY AND ASSOCIATES, INC. ASSUME RESPONSIBILITY FOR ERRORS OR OMISSIONS

- NOTES:
1. PARCEL 34-1-10P OUT OF 34-1-100 FOR 2001 1912/15 9/20/2000 110/25/00 U.S.I
 2. .03 ac from 34-1-10 to rd deed 236/235 3/23/02
 3. .02 ac from 34-1-10B to rd deed 236/231 6/16/02
 4. .05 ac from 34-1-100 to rd deed 236/230 7/7/02
 5. 34-1-10B from 34-1-10C deed 232/179 6/26/02
 6. 34-1-12B from 34-1-12L deed 242/143 5/18/02
 7. 34-1-3I from 34-1-3E deed 230/199 12/3/04
 8. 34-1-02B combined with 34-1-02A by owner's request 2004



MAP 52



MAP 53

MAP 35

- LEGEND
- County Boundary
 - Map Boundary
 - Limit of Ownership
 - Original Platted Line
 - District Line
 - Railroad Right of Way
 - City Limit
 - Easement
 - Stream
 - Church
 - School
 - Cemetery

HIGHTOWER ESTATES 1987 (PARCELS 40, 52 - 55)

TAX VALUATION MAP	LAND LOT 282 - 285	MAP NO.
ROCKDALE COUNTY	232 - 234, 339 - 341	34
GEORGIA	DISTRICT 4 & 16	
	G.M.O. 475	
DATE: DEC. 1, 1987	LAST REVISION: 2004	PHOTO NO. 05E 118