

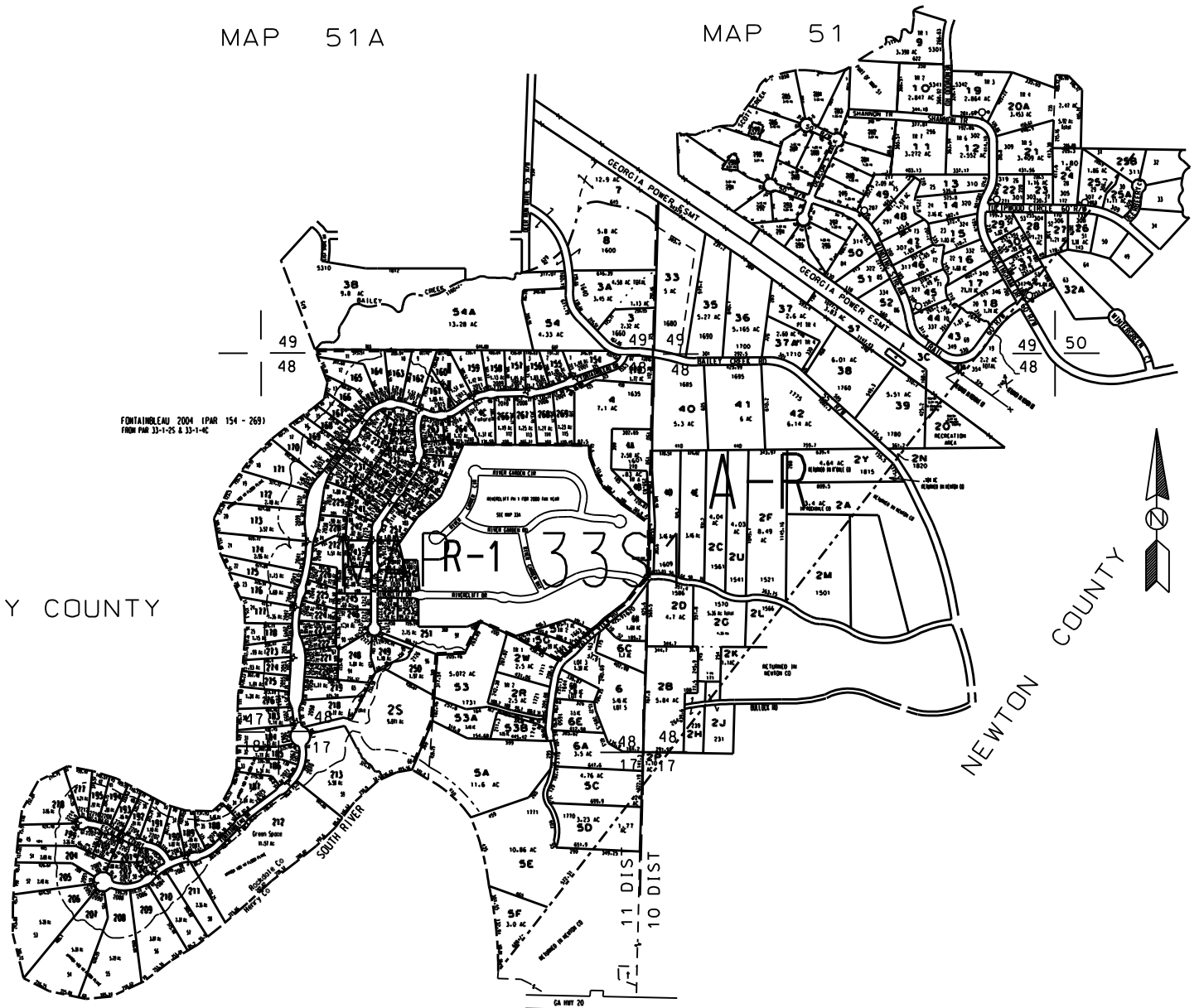
THIS MAP HAS BEEN COMPILED FROM THE MOST AUTHENTIC INFORMATION AVAILABLE, AND WE (THE ROCKDALE COUNTY NOR HUNTSVILLE ASSOCIATES, INC.) ASSUME RESPONSIBILITY FOR ERRORS OR OMISSIONS.

FONTAINEBLEAU 2004 (PAR 154 - 269)
FROM PAR 33-1-25 & 33-1-4C

- NOTES:
1. PARCEL 33-1-530 OUT OF 33-1-53A FOR 2002 PER DEED 2155/199, 11-5-01 (US 1-9-02)
 2. Parcel 51-2-9 combined with 33-1-204 by owner's request for 03
 3. 33-1-4C from 33-1-4 deed 2441/128 9/12/02
 4. Fontainebleau S44 from par 33-1-25 & 33-1-4C 2004
 5. 33-1-4D & 4E from 33-1-4 by plat 32757 2004
 6. 33-1-3E from 33-1-3 deed 3262/256 10/06/04
 7. 33-1-54A from 33-1-54 deed 3345/258 12/9/04
 8. DEACON'S MARK S40 out of 33-1-30 for 2009 (Parcels 219-299) by plat 36-66/61

HENRY COUNTY

NEWTON COUNTY



- LEGEND
- County Boundary
 - Map Boundary
 - Limit of Ownership
 - Original Platted Line
 - District Line
 - Railroad Right of Way
 - City Limit
 - Easement
 - Stream
- CHURCH SCHOOL CEMETERY

KEENELAND 1977
BUCKINGHAM S/D 1977 SECTION 1 & 2

TAX VALUATION MAP	LAND LOT 47, 48	MAP NO.
ROCKDALE COUNTY	49, 50, 17	33
GEORGIA	DISTRICT 11, 10	SHEET 1
	G. M. O. 561	
DATE DEC. 1, 1987	LAST REVISION 2004	PHOTO NO. 113, 174