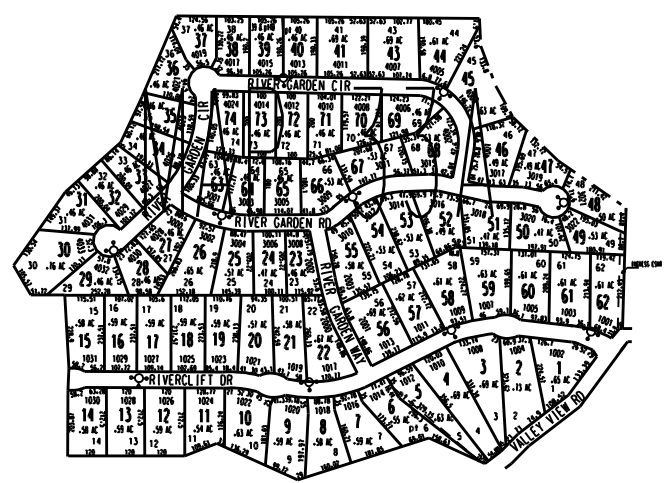




THIS MAP HAS BEEN COMPILED FROM THE MOST AUTHENTIC INFORMATION AVAILABLE, AND NEITHER ROCKDALE COUNTY NOR HUMPHRETT AND ASSOCIATES, INC. ASSUME RESPONSIBILITY FOR ERRORS OR OMISSIONS

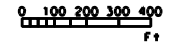


Note:
1. .04 ac from 33A-1-6 to 33A-1-5 deed 2807/87 3/13/03

RIVERCLIFT PH 1 1999 (PAR 1 - 74) FROM PAR 33-1-25 FOR TAX YEAR 2000
NOTE: Deleted lot 42, Divided area between lots 41 & 43 per revised plot 31/05 Nov 02

LEGEND

- ZONING
 - County Boundary
 - Map Boundary
 - Limit of Ownership
 - Original Platted Line
 - District Line
 - Railroad Right of Way
 - City Limit
 - Easement
 - Stream
- CHURCH SCHOOL CEMETERY



TAX VALUATION MAP	LAND LOT	48	MAP NO.
ROCKDALE COUNTY	DISTRICT	11	33A
GEORGIA	G. M. O.		
DATE: 1999	LAST REVISION 2003	PHOTO NO.	