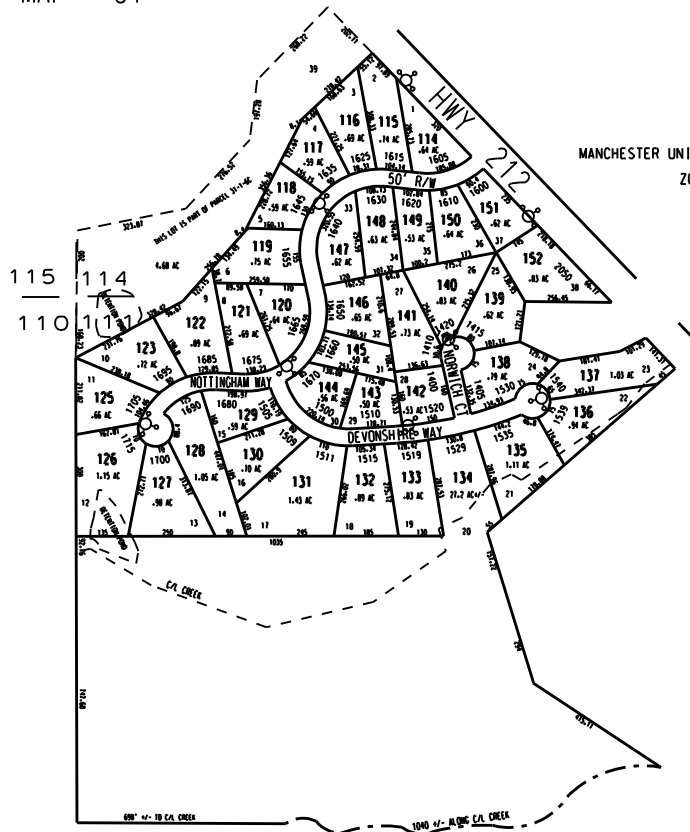


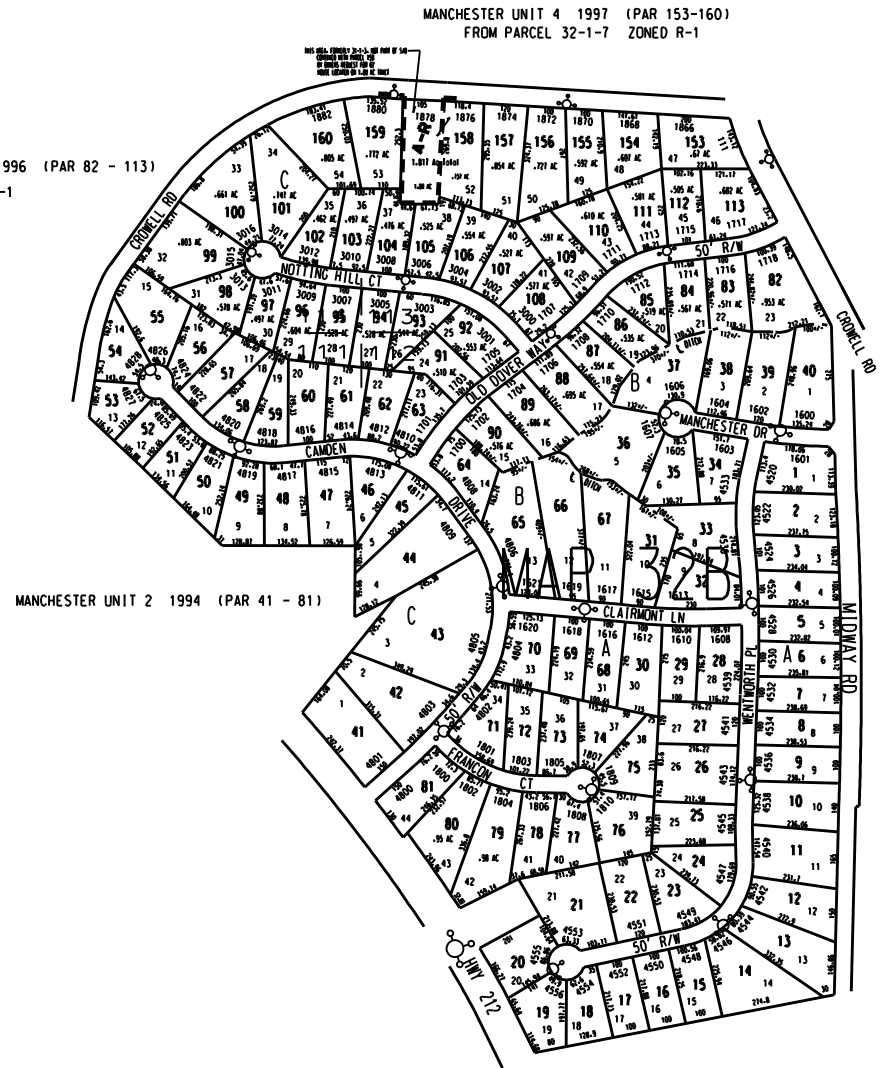
THIS MAP HAS BEEN COMPILED FROM THE MOST AUTHENTIC INFORMATION AVAILABLE, AND NEITHER ROCKDALE COUNTY NOR HUNNICUTT AND ASSOCIATES, INC. ASSUME RESPONSIBILITY FOR ERRORS OR OMISSIONS

MAP 31



STRATFORD S/D 1997 (PARCELS 114 - 151) ZONED R-1
FROM PARCELS 31-1-68
& 32-2-14

MAP 32



MANCHESTER S/D 1993 (PAR 1 - 40)
ZONED R-1

MANCHESTER UNIT 3 1996 (PAR 82 - 113)
ZONED R-1

MANCHESTER UNIT 4 1997 (PAR 153-160)
FROM PARCEL 32-1-7 ZONED R-1

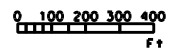
MANCHESTER UNIT 2 1994 (PAR 41 - 81)

LEGEND

- ZONING
- County Boundary
- Map Boundary
- Limit of Ownership
- Original Platted Line
- District Line
- Railroad Right of Way
- City Limit
- Easement
- Stream
- CHURCH
- SCHOOL
- CEMETERY

NOTE:

1. 0.08 ac from 328-1-80 to rd, deed 2501/164 10/5/02
2. 0.021 ac from 328-1-19 to hwy 212 deed 2508/183 10/24/02
3. 0.011 ac from 328-1-20 to hwy 212 deed 2508/181 10/22/02



TAX VALUATION MAP		LAND LOT	DISTRICT	MAP NO.
ROCKDALE COUNTY		112	11	328
GEORGIA				
DATE: 1993	LAST REVISION: 2002	PHOTO NO.		11-2001