

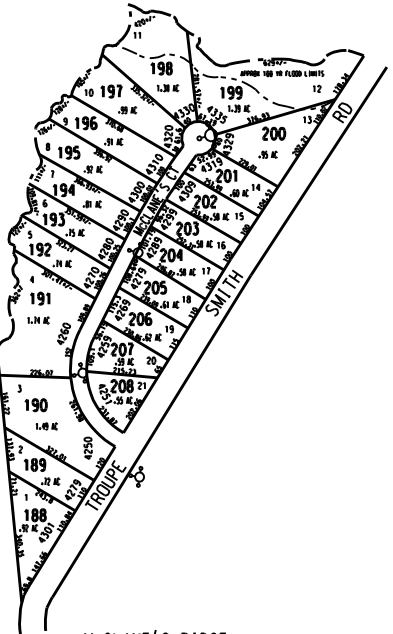
THIS MAP WAS REPRODUCED FROM THE ORIGINAL RECORDS OF THE COUNTY CLERK'S OFFICE. THE COUNTY CLERK'S OFFICE ASSUMES NO LIABILITY FOR ERRORS OR OMISSIONS.



ZONED R-1

- OUAIL MANOR UNIT 3, 1988 (PAR 148 - 187)
- OUAIL MANOR UNIT 2, 1986 (PAR 108 - 147)
- OUAIL MANOR UNIT 1, 1986 (PAR 81 - 107)
- OUAIL RUN SUB UNIT 3, 1985 (PAR 44 - 80)
- OUAIL RUN SUB UNIT 2, 1984 (PAR 15 - 43)
- OUAIL RUN SUB UNIT 1, 1984 (PAR 1 - 14)

Note:
1. 31A-1-179 combined with 31A-1-178 by owners request 2004



McCLANE'S RIDGE 1999 (PAR 188 - 208)
FOR 2000 TAX YEAR

- LEGEND
- County Boundary
 - Map Boundary
 - Limit of Jurisdiction
 - Original Platted Line
 - Platted Right of Way
 - City Limits
 - Stream
 - Church
 - School
 - Cemetery

TAX VALUATION MAP
ROCKDALE COUNTY
GEORGIA
DATE: DEC. 1, 1999
SCALE: 1" = 200'

0 100 200 300 400
Feet