

THIS MAP HAS BEEN COMPILED FROM THE MOST AUTHENTIC INFORMATION AVAILABLE, AND NEITHER ROCKDALE COUNTY NOR MUNICIPALITY AND ASSOCIATES, INC. ASSUME RESPONSIBILITY FOR ERRORS OR OMISSIONS

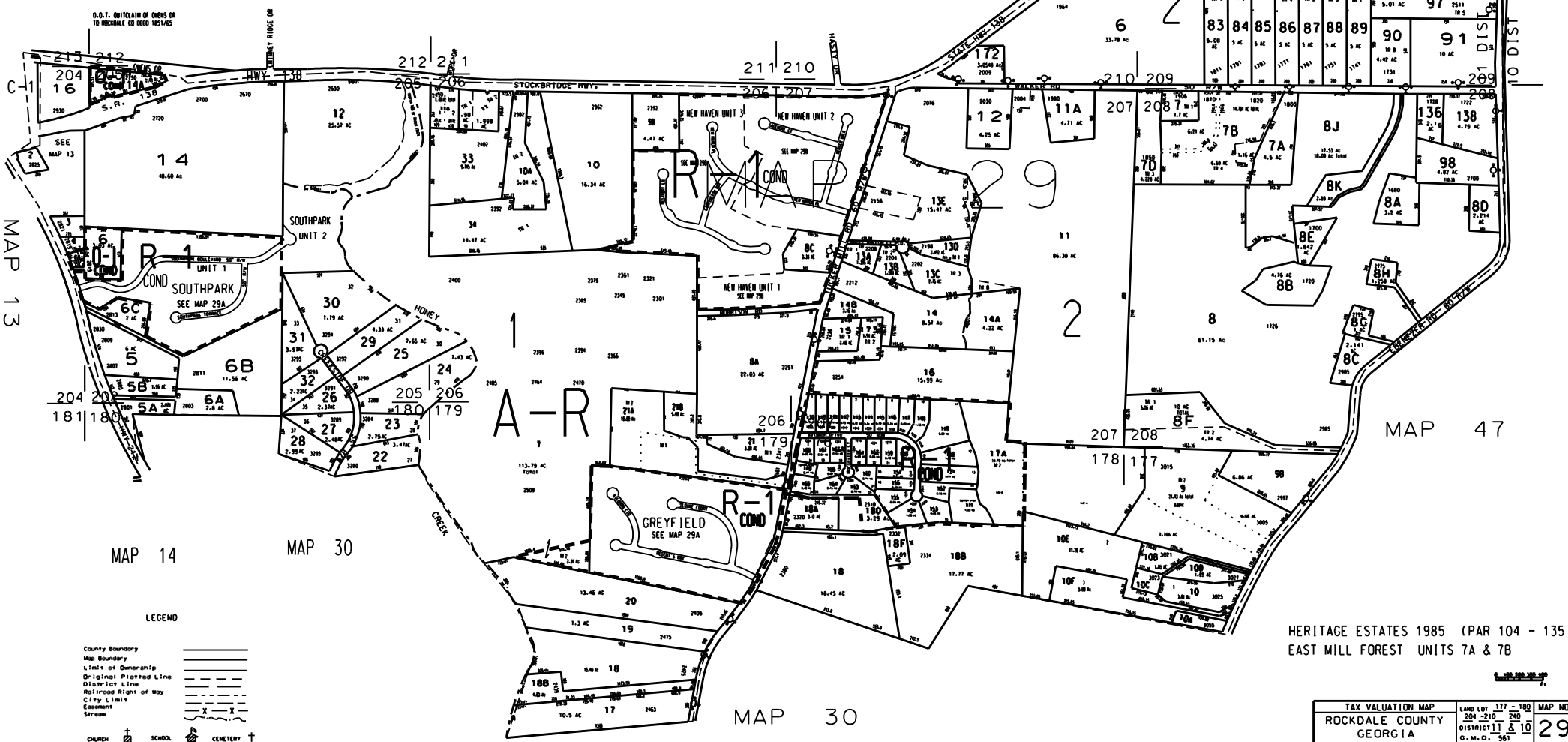
- NOTE:
1. 1.30 ac from 29-1-8 to New Haven S/D until 4 plat 3/1/63 2003
 2. 29-1-13 combined with 29-2-13 by owners request for 2003
 3. 1.33 ac from 29-1-8 to 29-1-8, deed 24/3/2003 3/31/03
 4. 29-1-18B from 29-1-18, deed 2/2/01 5/4/03
 5. 4.17 ac from 29-1-18B to 29-1-18, deed 2/26/2003 6/18/03 plat 3/1/03
 6. 21.83 ac from 29-1-8 & 29-1-8B to New Haven Unit 2, 2003
 7. 29-2-10E from 29-2-10, deed 2/23/1994 8/26/03
 8. 29-2-10E from 29-2-10, deed 2/23/1994 8/26/03
 9. 2.36 ac to 29-1-13 from 29-1-13 & 29-1-13B from 29-1-13, deed 2003/01 & 2003/02, map 2003
 10. New Haven Unit 1 from 29-1-13 & 29-1-13B revised to 1-11 ordinance # 2004-06, case # 2004/01
 11. 29-2-20B from 29-2-20, deed 3/12/03 1/1/06
 12. 2.36 ac of 29-1-13B revised from 24 to 4-1 and case # 2004/03 ordinance # 2004/06
 13. New Haven Unit 1 from 29-1-13 & 29-1-13B, Plat 3/1/03 2003
 14. 29-1-18B from 29-1-18, deed 2003/01 10/1/06
 15. 29-1-18B revised by 4-1 conditional case # 2004/06 ordinance # 2004-07
 16. Airport 1/4 from 29-2-11 2008 Plat 3/2/08 Parcel 120-101



MAP 45

MAP 28

MAP 46



HERITAGE ESTATES 1985 (PAR 104 - 135)
EAST MILL FOREST UNITS 7A & 7B

LEGEND

- County Boundary
- Map Boundary
- Limit of Demerzhip
- Original Platred Line
- District Line
- Railroad Right of Way
- City Limit
- Easement
- Stream
- CHURCH
- SCHOOL
- CEMETERY

TAX VALUATION MAP	LAND LOT 117 - 180	MAP NO.
ROCKDALE COUNTY	204-210 240	29
GEORGIA	DISTRICT 11 & 10	
	D. M. O. - 561	
DATE: DEC. 1, 1987	LAST REVISION: 2004	PHOTO NO.: 1095 - 110