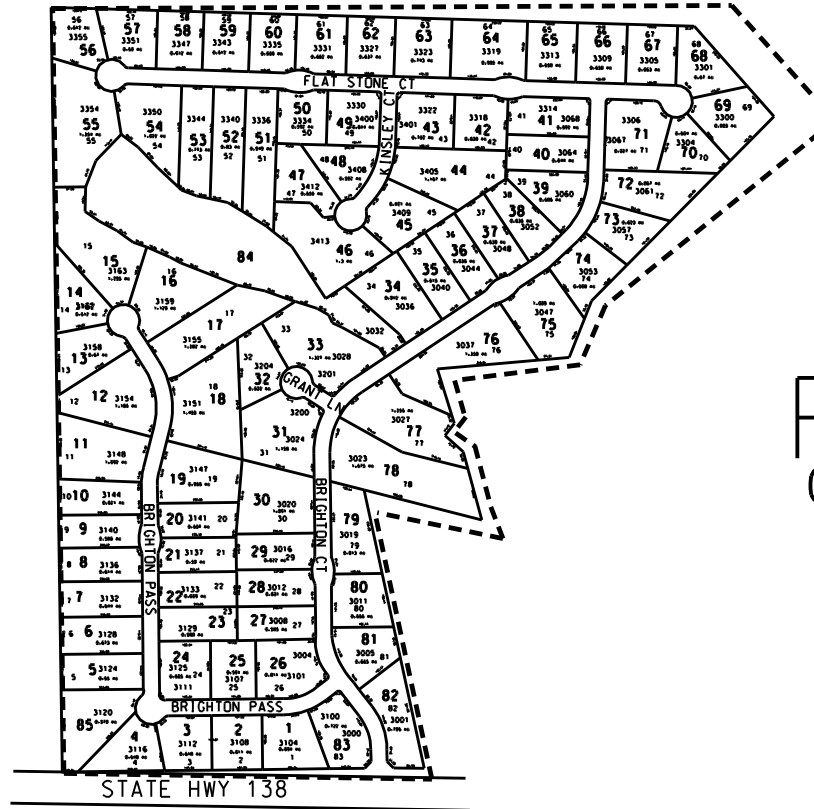


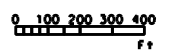
THIS MAP HAS BEEN COMPILED FROM THE MOST AUTHENTIC INFORMATION AVAILABLE, AND NEITHER ROCKDALE COUNTY NOR HUMPHRETT AND ASSOCIATES, INC., ASSUME RESPONSIBILITY FOR ERRORS OR OMISSIONS



R-1
COND

- LEGEND
- County Boundary
 - Map Boundary
 - Line of Ownership
 - Original Platted Line
 - District Line
 - Railroad Right of way
 - City Limit
 - Easement
 - Stream
 - CHURCH
 - SCHOOL
 - CEMETERY

BRIGHTON 2005 (Par 01 - 84)
From parcel 29-1-9H, 9M & 9N
ALL SUBDIVISION ROADS HAVE 50' ROW



TAX VALUATION MAP	LAND LOT 210 & 211	MAP NO
ROCKDALE COUNTY GEORGIA	DISTRICT 11	288
DATE DEC. 1, 1987	LAST REVISION 2005	PHOTO NO.