













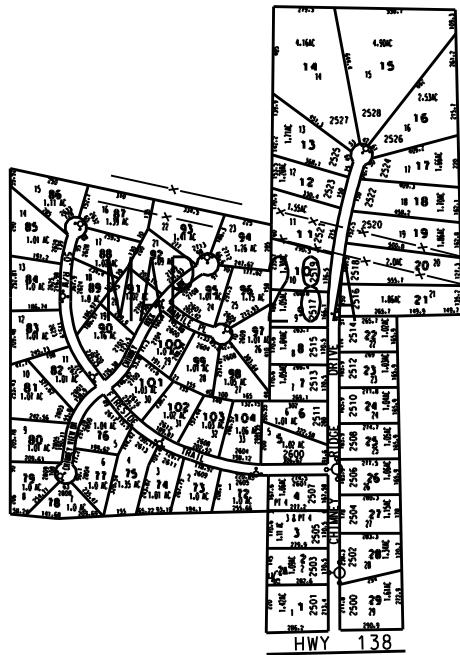
NOTES:
 1. PARCEL 204-1-256 FROM 20-1-170 FOR '99 PART OF LOCHNER

THIS MAP HAS BEEN COMPILED FROM THE MOST AUTHENTIC INFORMATION AVAILABLE, AND NEITHER ROCKDALE COUNTY NOR HUNNICUTT AND ASSOCIATES, INC. ASSUME RESPONSIBILITY FOR ERRORS OR OMISSIONS

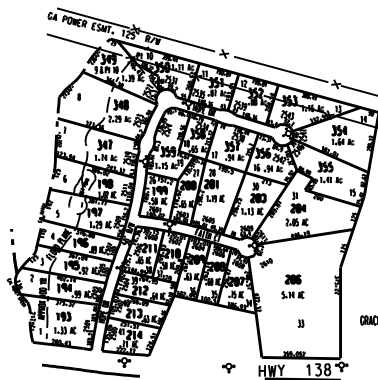
LEGEND

- County Boundary 
- Map Boundary 
- Limit of Ownership 
- Original Platted Line 
- District Line 
- Railroad Right of Way 
- City Limit 
- Easement 
- Stream 
- CHURCH 
- SCHOOL 
- CEMETERY 

CHIMNEY RIDGE ESTATES UNIT 2 1991 (PAR 72 - 104)
 COURTNEY LAKE PH. 2 1988 (PAR 56 - 71)
 COURTNEY LAKE PH. 1 1988 (PAR 30 - 55)
 CHIMNEY RIDGE ESTATES 1987 (PAR 1 - 29)



GA POWER ESM. 125' R/W



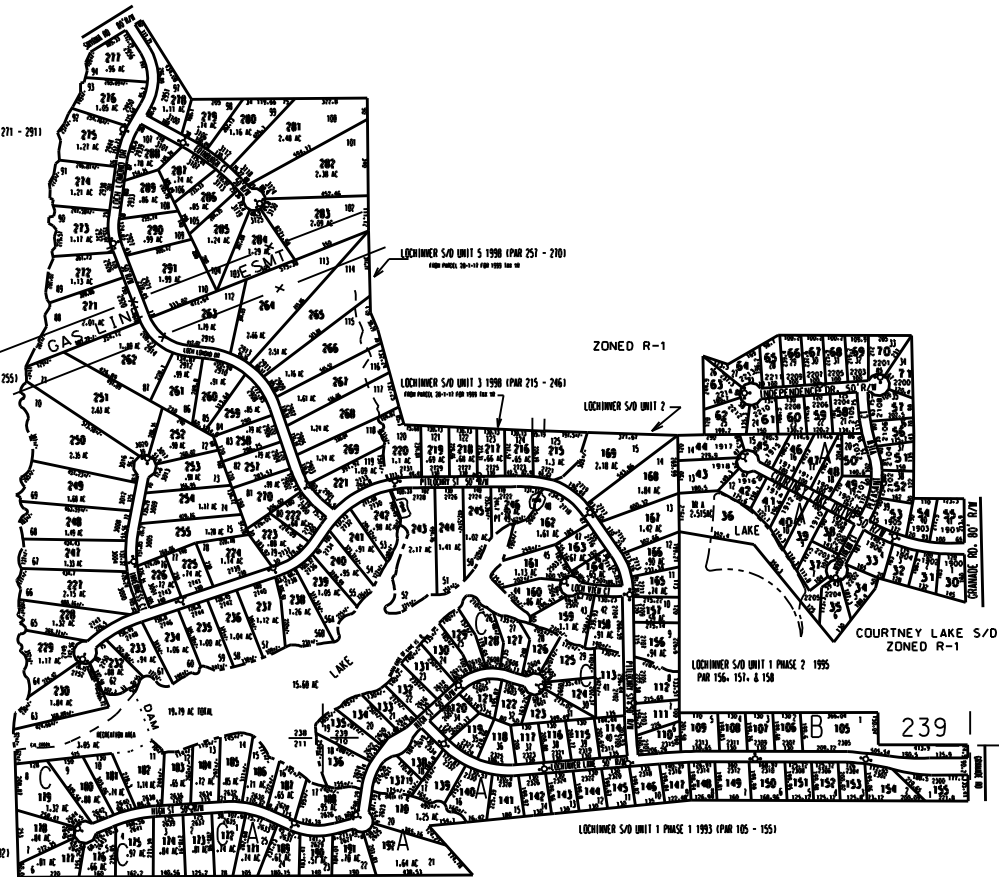
GRACELAND ESTATES UNIT 2 2003 (PAR 347 - 359)

GRACELAND ESTATES UNIT 1 1996 (PAR 193 - 214) FROM 20-1

LOCHNER S/O UNIT 6 1999 (PAR 271 - 291)
 FROM PARCEL 20-1-170 FOR 200-10

LOCHNER S/O UNIT 4 1998 (PAR 247 - 255)
 FROM PARCEL 20-1-170 FOR 200-10

LOCHNER S/O UNIT 2 1995 (PAR 159 - 192)
 FROM PAR 20-1-170



LOCHNER S/O UNIT 5 1998 (PAR 251 - 270)
 FROM PARCEL 20-1-170 FOR 200-10

LOCHNER S/O UNIT 3 1998 (PAR 215 - 246)
 FROM PARCEL 20-1-170 FOR 200-10

LOCHNER S/O UNIT 2

LOCHNER S/O UNIT 1 PHASE 2 1995
 PAR 156, 157, & 158

LOCHNER S/O UNIT 1 PHASE 1 1993 (PAR 105 - 155)

CEDAR GROVE UNIT 3 2002 (PAR 320 - 346)
 FROM PAR 20-1-9 & 20-1-9



CEDAR GROVE UNIT 2 2002 (PAR 319 - 321)
 FROM PAR 20-1-9 FOR 02

CEDAR GROVE UNIT 1 2001 (PAR 292 - 318)
 FROM PAR 20-1-9 FOR 02

TAX VALUATION MAP	LAND LOT 212-233	MAP NO.
ROCKDALE COUNTY	DISTRICT T1	28A
GEORGIA	C. M. O.	
DATE: DEC. 1, 1987	LAST REVISION: 2004	PHOTO NO. 1:250 300 400