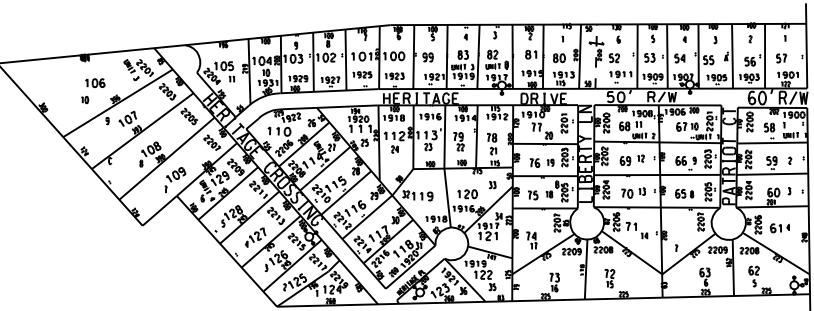




MAP 45

THIS MAP HAS BEEN COMPILED FROM THE MOST AUTHENTIC INFORMATION AVAILABLE, AND NEITHER ROCKDALE COUNTY NOR HUMPHRETT AND ASSOCIATES, INC., ASSUME RESPONSIBILITY FOR ERRORS OR OMISSIONS



MAP 27

244 243

237 238

HERITAGE HEIGHTS ZONED R-1

- NOTES:
1. PARCEL 28-1-4J FROM 28-1-4 FOR 788, 1365/308, 5-21-98 (US)
  2. PARCEL 28-1-2C FROM 28-1-2B FOR 2000, 1783/150, 11-18-99 11-11-00 USJ
  3. PARCEL 28-1-2 COMBINED WITH 28-1-2B FOR 58, PER PLAT 27/115 (US 10-17-01)
  4. 28-1-288 from 28-1-286 deed 243/258 10/2/01
  5. 28-1-181 from 28-1-188 deed 242/249 5/11/02
  6. 28-1-132 from 45-1-16 deed 245/221 10/3/02
  7. 28-1-348 combined with 28-1-22 by owner's request for 03
  8. 28-1-43A from 28-1-43 by owner's request for 03
  9. 28-1-39, 59 & 58 retracted from all to 81 without Ordinance # 0-2004-05 case # 2003/16
  10. 28-1-338 from 28-1-33 & reconfigured 28-1-33 & 334 by plat 32/708

SCALE: 2X MAP SCALE

MAP 13

MAP 29

UNIT 4 1986 (PAR 114 - 129)  
 UNIT 3 1985 (PAR 99 - 113)  
 UNIT 2 1985 (PAR 68 - 83)  
 UNIT 1 1984 (PAR 42 - 67)

TAX VALUATION MAP	LAND LOT 210 - 913	MAP NO.
ROCKDALE COUNTY	227 - 239, 240	28
GEORGIA	DISTRICT 1, 7	
	C. M. D. 476	
DATE: DEC. 1, 1987	LAST REVISION: 2004	PHOTO NO. 107

- LEGEND
- County Boundary
  - Map Boundary
  - Limit of Ownership
  - Original Platted Line
  - District Line
  - Railroad Right of Way
  - City Limit
  - Equipment
  - Stream
  - CHURCH
  - SCHOOL
  - CEMETERY

NOTE O.C. DOT TO ROCKDALE CO.  
 4-17-2000 DEED BOOK 1891 PAGE 65  
 PORTION OF OHENS ROAD