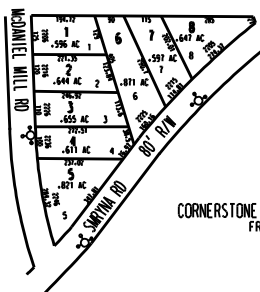




THIS MAP HAS BEEN COMPILED FROM THE MOST AUTHENTIC INFORMATION AVAILABLE, AND NEITHER ROCKDALE COUNTY NOR HUNNICUTT AND ASSOCIATES, INC. ASSUME RESPONSIBILITY FOR ERRORS OR OMISSIONS

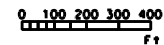
MAP 27C



CORNERSTONE S/D 1997 (PAR 1 - 8) ZONED R-1
FROM PARCEL 27-1-93

LEGEND

- ZONING
 - County Boundary
 - Map Boundary
 - Limit of Ownership
 - Original Platted Line
 - District Line
 - Railroad Right of Way
 - City Limit
 - Courthouse
 - Stream
- CHURCH SCHOOL CEMETERY



TAX VALUATION MAP	LAND LOT	237	MAP NO.
ROCKDALE COUNTY	DISTRICT	11	27C
GEORGIA	C. M. O.		
DATE: 1997	PHOTO NO.		