

THIS MAP HAS BEEN COMPILED FROM THE MOST AUTHENTIC INFORMATION AVAILABLE, AND NEITHER ROCKDALE COUNTY NOR HUNNICUTT AND ASSOCIATES, INC., ASSUME RESPONSIBILITY FOR ERRORS OR OMISSIONS

Note:
1. 0.03ac. from 27-1-38 to 27A-1-267 deed 3394/327 3/3/05

LIONSGATE EAST 2005 (Par 272 - 334)
from 27-1-18, 27-1-1C and part 27-1-1

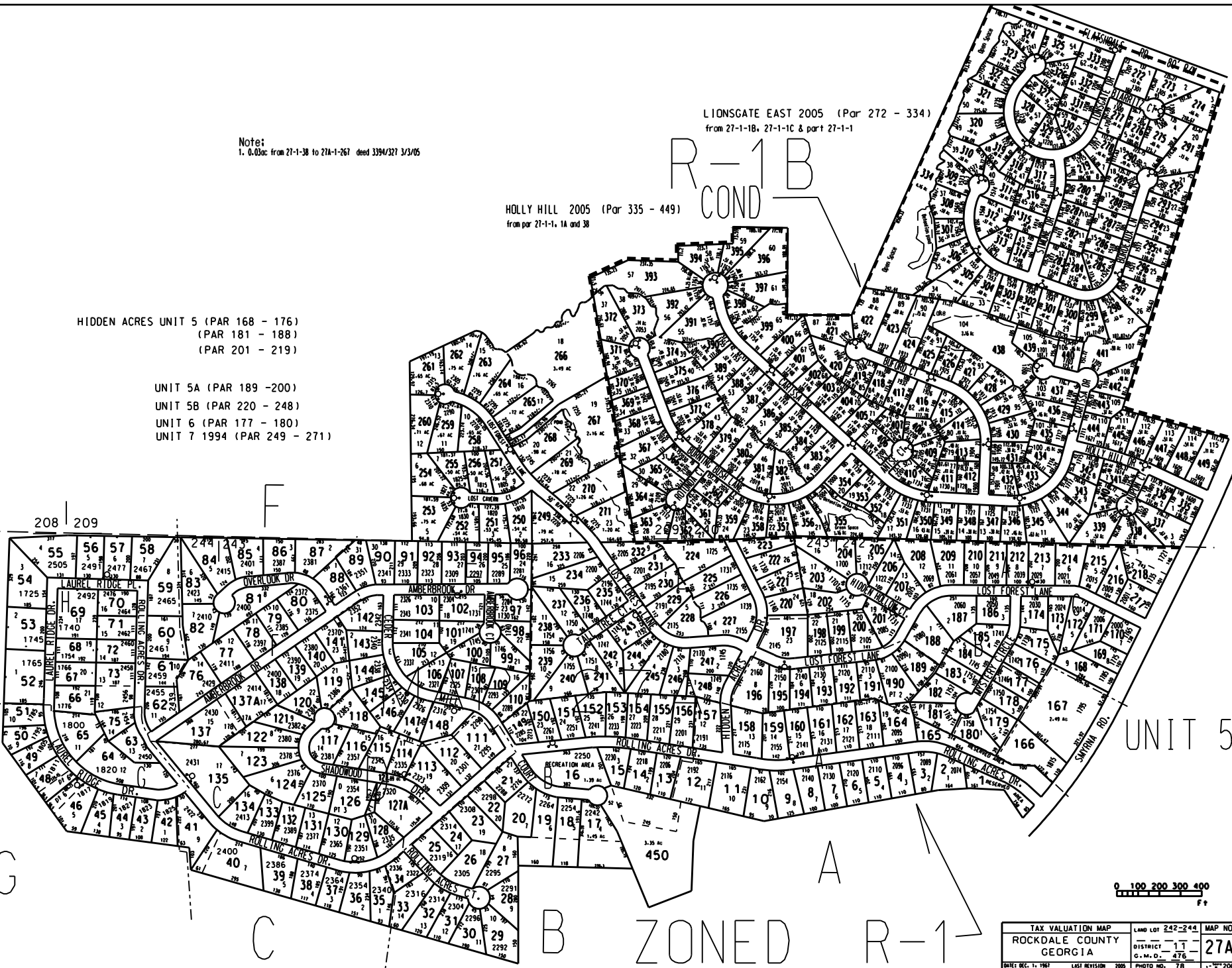
HOLLY HILL 2005 (Par 335 - 449)
from par 27-1-1, 1A and 38

R-1 B
COND

HIDDEN ACRES UNIT 5 (PAR 168 - 176)
(PAR 181 - 188)
(PAR 201 - 219)

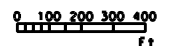
UNIT 5A (PAR 189 -200)
UNIT 5B (PAR 220 - 248)
UNIT 6 (PAR 177 - 180)
UNIT 7 1994 (PAR 249 - 271)

16 DISTRICT
11 DISTRICT



LEGEND

- County Boundary
- Map Boundary
- Line of Ownership
- Original Platting Line
- Division Line
- Revised Right of Way
- City Limits
- Stream



| | | |
|----------------------------------|-----------------------------------|-----------------------------|
| TAX VALUATION MAP | LAND LOT 242-244 | MAP NO. |
| ROCKDALE COUNTY | DISTRICT 17 | 27A |
| GEORGIA | G.M.O. 476 | |
| <small>DATE DEC. 1, 1997</small> | <small>LAST REVISION 2005</small> | <small>PHOTO NO. 78</small> |