

THIS MAP HAS BEEN COMPILED FROM THE MOST AUTHENTIC INFORMATION AVAILABLE, AND NEITHER ROCKDALE COUNTY NOR HERRICUTT AND ASSOCIATES, INC. ASSUME RESPONSIBILITY FOR ERRORS OR OMISSIONS

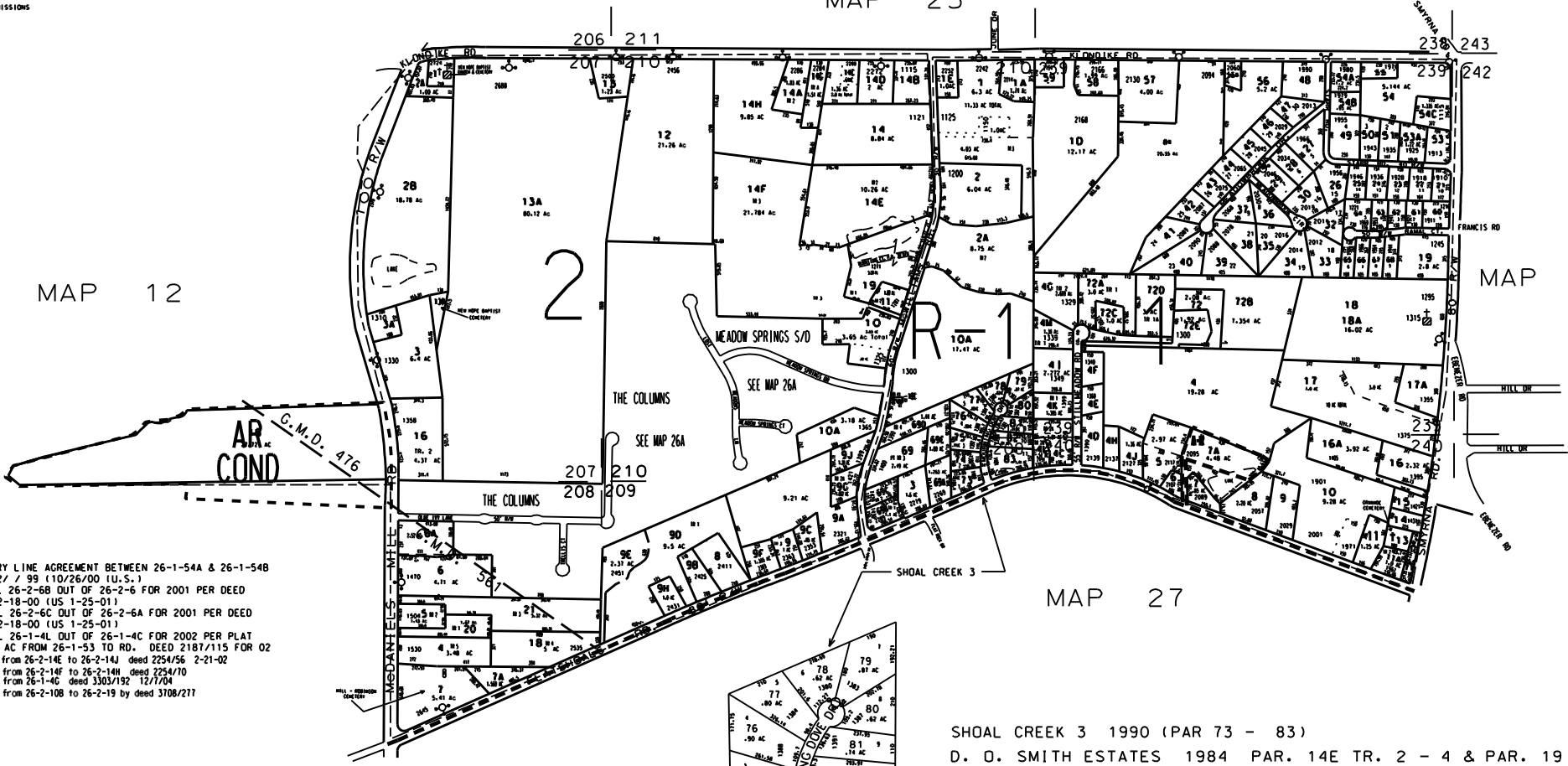
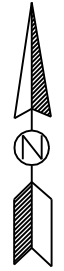
MAP 11

MAP 25

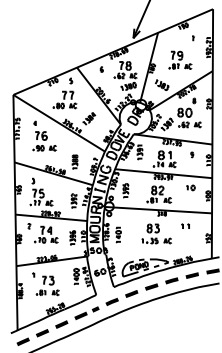
MAP 12

MAP 44

MAP 27



- NOTES:
1. BOUNDARY LINE AGREEMENT BETWEEN 26-1-54A & 26-1-54B 1908/335 2 / 99 (10/26/00 (U.S.))
 2. PARCEL 26-2-6B OUT OF 26-2-6 FOR 2001 PER DEED 1949/74 12-18-00 (U.S. 1-25-01)
 3. PARCEL 26-2-6C OUT OF 26-2-6A FOR 2001 PER DEED 1949/76 12-18-00 (U.S. 1-25-01)
 4. PARCEL 26-1-4L OUT OF 26-1-4C FOR 2002 PER PLAT
 5. 0.022 AC FROM 26-1-53 TO RD. DEED 2187/115 FOR 02
 6. 8.03 ac from 26-2-14E to 26-2-14J deed 2254/56 2-21-02
 7. 9.89 ac from 26-2-14F to 26-2-14H deed 2254/70
 8. 26-1-4M from 26-1-4C deed 3303/192 12/7/04
 9. 0.17 ac from 26-2-10B to 26-2-19 by deed 3108/277



SCALE: 2 X MAP SCALE

SHOAL CREEK 3 1990 (PAR 73 - 83)
 D. O. SMITH ESTATES 1984 PAR. 14E TR. 2 - 4 & PAR. 19 TR. 1
 RAMAL SUB. 1972 PAR. 60 - 68
 GRANT C. STAR SUB. P.B. C PG. 27 PAR. 21-54

LEGEND

- County Boundary
- Map Boundary
- Limit of Ownership
- Original Platted Line
- District Line
- Railroad Right of Way
- City Limit
- Easement
- Stream

- CHURCH
- SCHOOL
- CEMETERY

| | | | |
|-------------------------|--------------------|-------------------|-----------|
| TAX VALUATION MAP | | LAND LOT 207-208 | MAP NO. |
| ROCKDALE COUNTY GEORGIA | | 209-210-239-245 | 26 |
| DISTRICT 15 | | | |
| G.M.D. 476 | | | |
| DATE REC. 1-1987 | LAST REVISION 2004 | PHOTO NO. 876-108 | 1" = 400' |