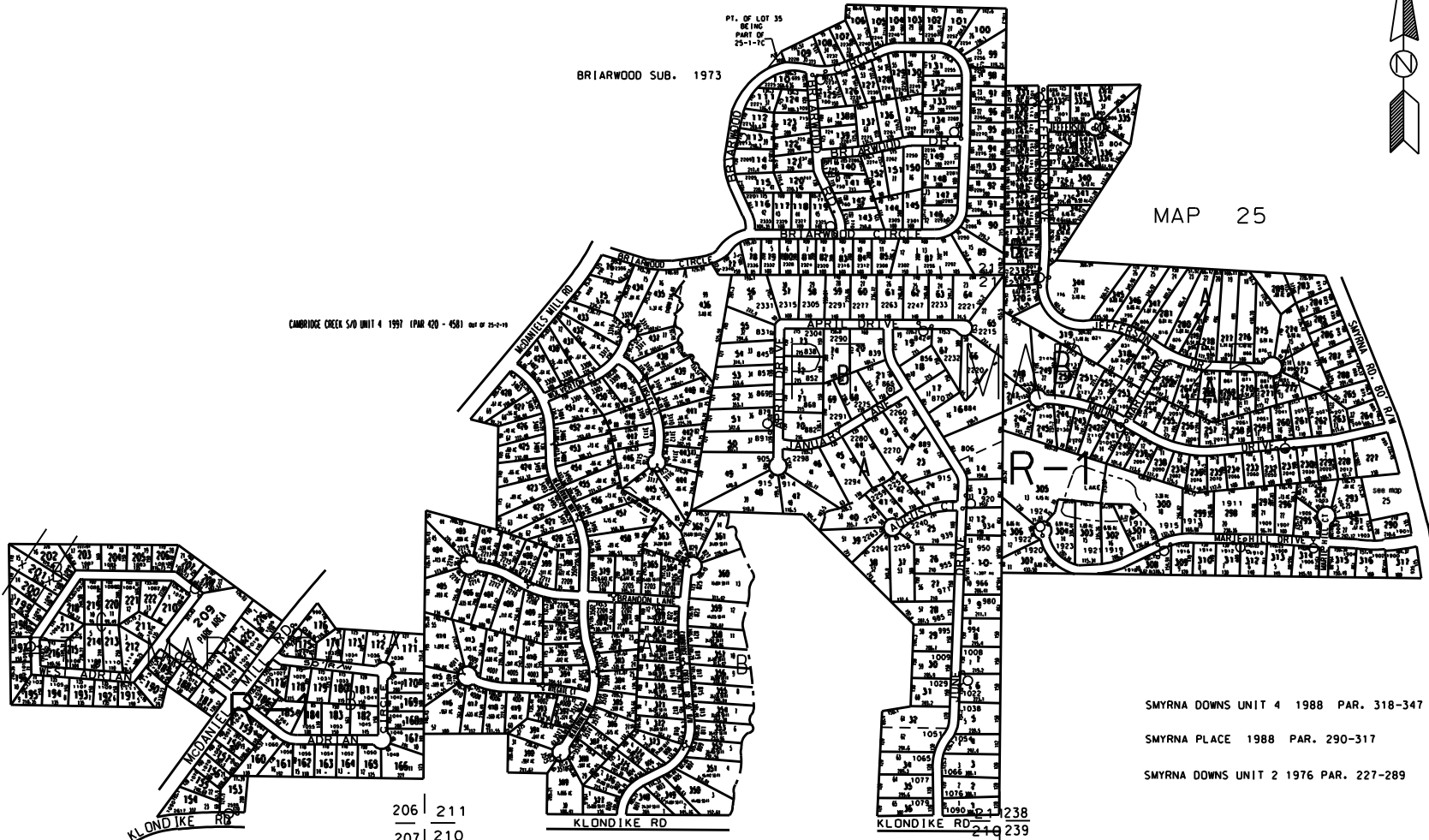


THIS MAP HAS BEEN COMPILED FROM THE MOST AUTHENTIC INFORMATION AVAILABLE, AND NEITHER ROCKDALE COUNTY NOR HUMMELT AND ASSOCIATES, INC. ASSUME RESPONSIBILITY FOR ERRORS OR OMISSIONS



MAP 11

MAP 25



**LEGEND**

- County Boundary
- Map Boundary
- Limit of Ownership
- Original Platted Line
- District Line
- Half-Acre Right of Way
- City Limit
- Common Stream

CHURCH    SCHOOL    CEMETERY

CAMBRIDGE CREEK S/O UNIT 4 1997 (PAR 420 - 450) REF # 25-2-19

BRIARWOOD SUB. 1973

ADRIAN VILLAS

CAMBRIDGE CREEK S/O UNIT 1 1994 (PAR 340 - 371)  
 CAMBRIDGE CREEK S/O UNIT 2 1996 (PAR 378 - 398) REF # 25-2-19  
 CAMBRIDGE CREEK S/O UNIT 3 1996 (PAR 399 - 419) REF # 25-2-19

FOUR SEASONS SUB. SEC. 2 1972 (PAR 37 - 67)  
 FOUR SEASONS SUB. SEC. 1 1971 (PAR 1 - 36)

SMYRNA DOWNS UNIT 4 1988 PAR. 318-347

SMYRNA PLACE 1988 PAR. 290-317

SMYRNA DOWNS UNIT 2 1976 PAR. 227-289

206 211  
 207 210

238  
 239

0 100 200 300 400

TAX VALUATION MAP	Case Lot 206, 211, 212	MAP NO.
ROCKDALE COUNTY	237, 238	25A
GEORGIA	DISTRICT 16	
DATE: DEC. 17, 1987	LAST REVISION: 1997	PHOTO: 1987