



# MAP 23

LEE PARK ESTATES SUB., PB A PG. 152  
PARCELS 1 - 5 BLK. 3; 1 - 9 BLK 5; 1 - 9 BLK 6  
1 - 6 BLK 7; 1 - 10 BLK 8; 25 BLK 4; 26 - 46 BLK 4

JEFF HUDSON SUB., PB C. PG. 214  
PARCELS 20 - 23F BLK 4

# MAP 24

1 5  
Approx 93.51 AC Remain  
R-1  
1761

# MAP 26

SMYRNA DOWNS SUB. PAR. 6 - 39 BLK 1

# MAP 10

THIS MAP HAS BEEN COMPILED FROM THE MOST AUTHENTIC INFORMATION AVAILABLE, AND NEITHER ROCKDALE COUNTY NOR HUNNIGUTY AND ASSOCIATES, INC. ASSUME RESPONSIBILITY FOR ERRORS OR OMISSIONS

### LEGEND

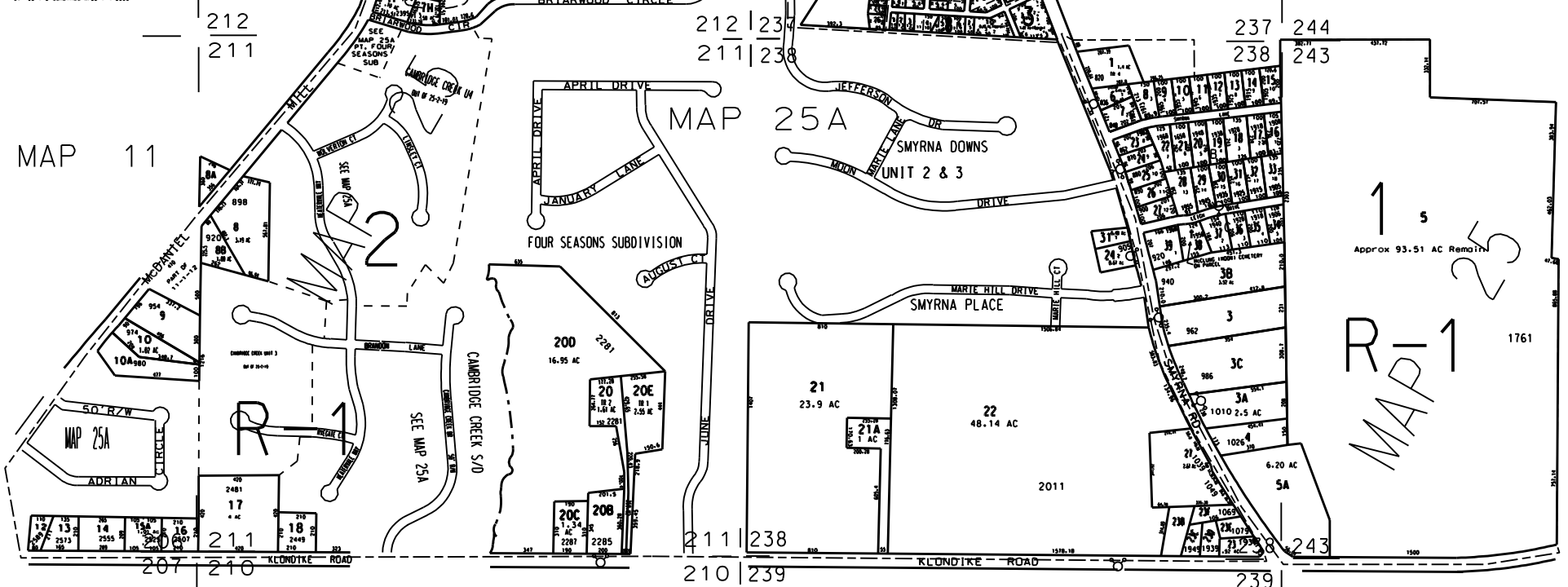
- County Boundary
- Map Boundary
- Limit of Ownership
- Original Platted Line
- District Line
- Railroad Right of Way
- City Limit
- Easement
- Stream
- CHURCH
- SCHOOL
- CEMETERY

### NOTES:

1. PARCEL 25-2-8B OUT OF 25-2-8 FOR 2001 PER DEED 1881/268 7-14-00 (U.S. 8-23-00)
2. 0.46 AC FROM 25-1-5 TO ROAD DEED 2187/60 NOV. 7, 2001
3. 0.003 AC FROM 25-1-4 TO RD. DEED 2187/103 FOR 02
4. 0.052 AC FROM 25-2-23A TO RD DEED 2214/255 9-15-2000 RECORDED JAN 02
5. 0.03 AC FROM 25-2-27 TO RD DEED 2214/241 9-15-00 RECORDED JAN 02
6. 25-4-5B combined w/25-4-4B 2006
7. 25-4-6 combined w/25-4-4 2006
8. 25-1-3 combined w/25-1-4 2006

# MAP 11

# MAP 25A



TAX VALUATION MAP	LAND LOT 211, 212, 237, 238	MAP NO.
ROCKDALE COUNTY	DISTRICT 16	25
GEORGIA	C.M.O. 476	
DATE: DEC. 1, 1987	LAST REVISION: 2001	PHOTO NO. 82 58