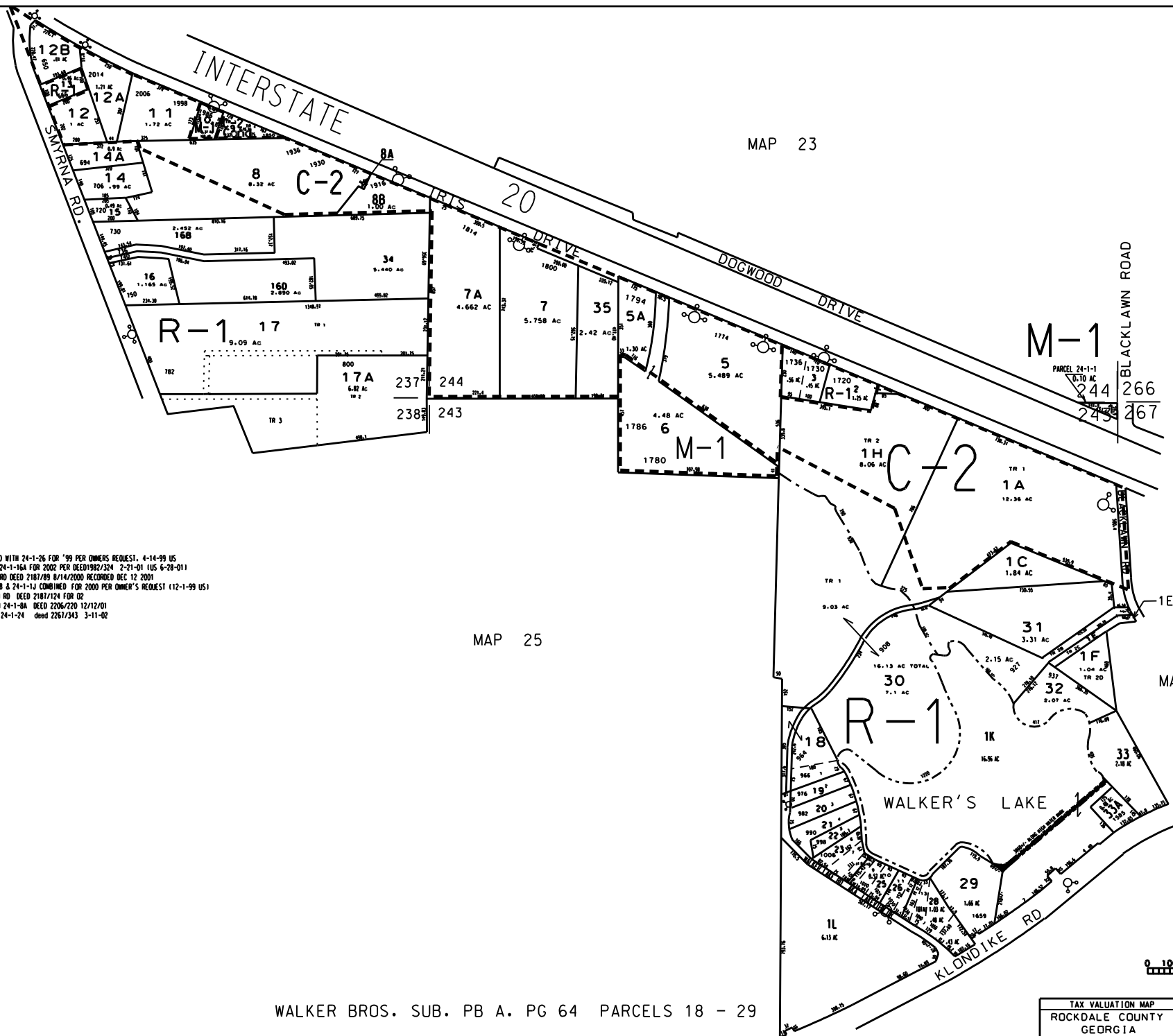


THIS MAP HAS BEEN COMPILED FROM THE MOST AUTHENTIC INFORMATION AVAILABLE, AND NEITHER ROCKDALE COUNTY NOR HUMMELT AND ASSOCIATES, INC., ASSUME RESPONSIBILITY FOR ERRORS OR OMISSIONS



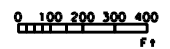
- NOTES:
1. PARCEL 24-1-27A COMBINED WITH 24-1-26 FOR '99 PER OWNERS REQUEST. 4-14-99 US
 2. PARCEL 24-1-160 OUT OF 24-1-16A FOR 2002 PER DEED1982/324 2-21-01 IUS 6-28-01
 3. .53 AC FROM 24-1-1L TO RD DEED 2187/89 8/14/2000 RECORDED DEC 12 2001
 4. PARCELS 24-1-27, 24-1-28 & 24-1-1J COMBINED FOR 2000 PER OWNER'S REQUEST (12-1-99 US)
 5. 0.06 AC FROM 24-1-29 TO RD DEED 2187/124 FOR 02
 6. 0.003 AC FROM 24-1-B TO 24-1-8A DEED 2206/220 12/12/01
 7. .09 ac from 24-1-24 to 24-1-24 deed 2267/343 3-11-02

MAP 25

MAP 43

- LEGEND
- County Boundary
 - Map Boundary
 - Limit of Ownership
 - Original Platted Line
 - District Line
 - Railroad Right of Way
 - City Limit
 - Equipment
 - Stream
- CHURCH + SCHOOL CEMETERY +

WALKER BROS. SUB. PB A. PG 64 PARCELS 18 - 29



TAX VALUATION MAP	LAND LOT	237 - 244	MAP NO.
ROCKDALE COUNTY	DISTRICT	16	24
GEORGIA	C.M.O.	476	
DATE: DEC. 1, 1987	LAST REVISION: 2002	PHOTO NO. 892 58	1" = 200'