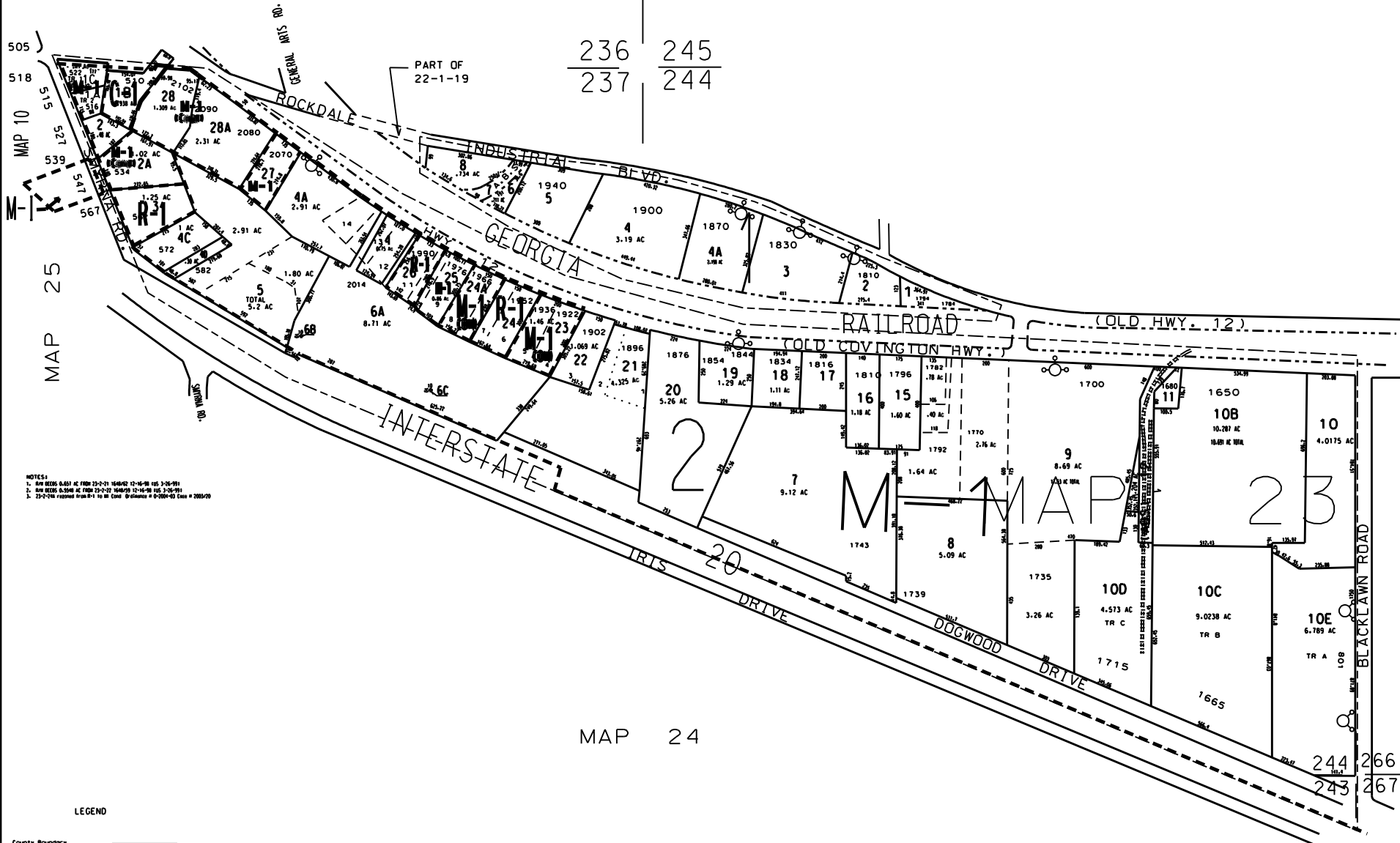


THIS MAP HAS BEEN COMPILED FROM THE MOST AUTHENTIC INFORMATION AVAILABLE, AND NEITHER ROCKDALE COUNTY NOR MORRIS AND ASSOCIATES, INC. ASSUME RESPONSIBILITY FOR ERRORS OR OMISSIONS

MAP 22



MAP 10
MAP 25

236
237

245
244

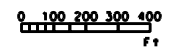
PART OF 22-1-19

NOTES:
1. ARE BEING 0.031 AC FROM 22-2-21 166422 12-16-98 USE 2-26-99
2. ARE BEING 0.3548 AC FROM 22-2-27 166423 12-16-98 USE 2-26-99
3. 22-2-26 returned from R-1 to M Code Ordinance # 0-2001-03 Date # 2005/09

- LEGEND
- County Boundary
 - Map Boundary
 - Limit of Ownership
 - Original Platted Line
 - District Line
 - Railroad Right of Way
 - City Limit
 - Easement
 - Stream
- CHURCH SCHOOL CEMETERY

MAP 43

MAP 24



RALPH MORRIS & CHESTER SMITH SUB. P.B. A. PG. 13

TAX VALUATION MAP	LAND LOT 237, 243	MAP NO.
ROCKDALE COUNTY	244, 266, & 267	23
GEORGIA	DISTRICT 16	
	G.M.O. 476	
DATES DEC. 1, 1987 LAST REVISION 2004 PHOTO NO. 58, 60		