

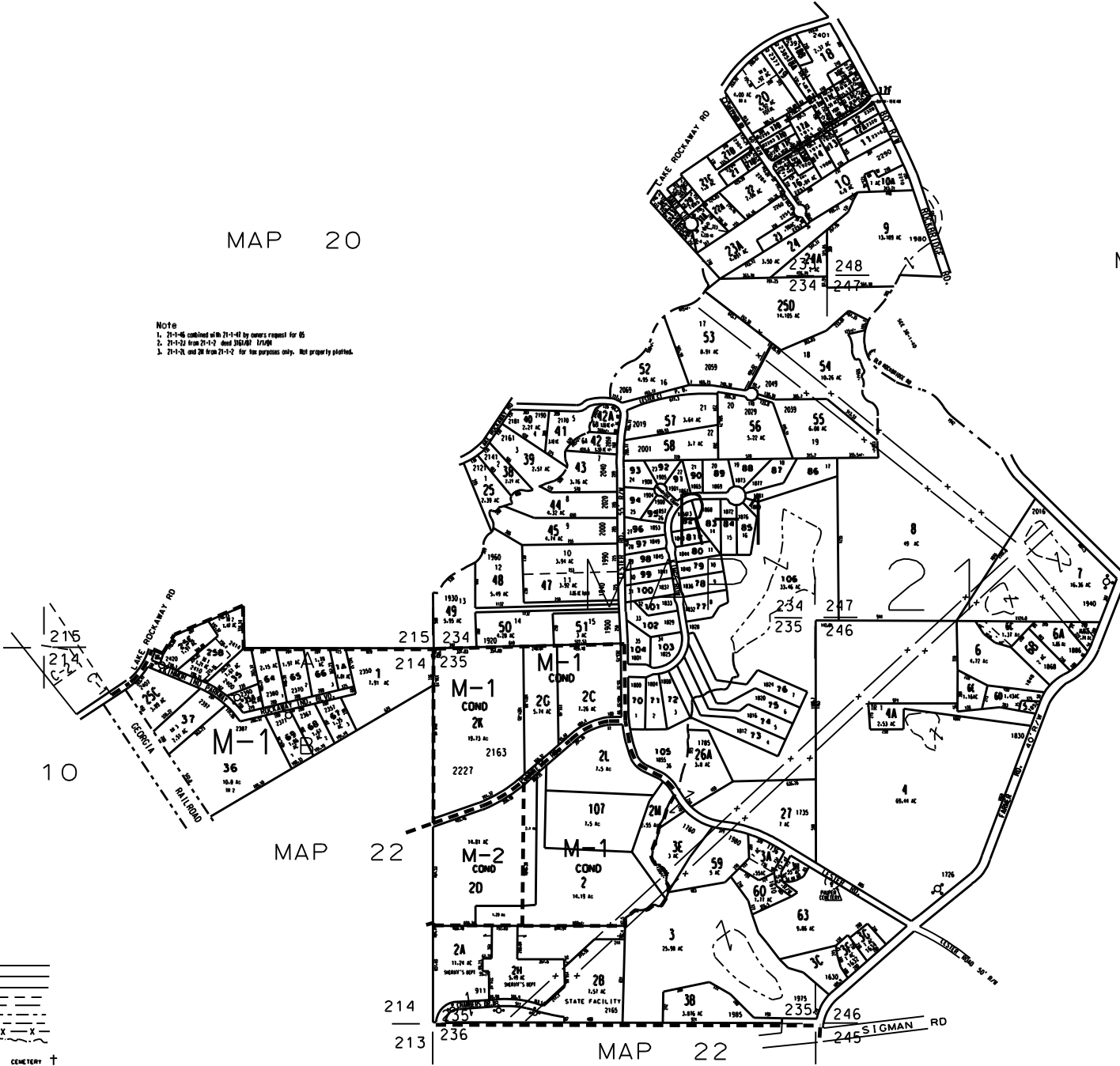
THIS MAP HAS BEEN COMPILED FROM THE MOST AUTHENTIC INFORMATION AVAILABLE, AND WE THEREBY ROCKDALE COUNTY NOR MUNICIPALITY AND ASSOCIATES, INC. ASSUME RESPONSIBILITY FOR ERRORS OR OMISSIONS



MAP 20

MAP 38

Note  
 1. 21-1-6 combined with 21-1-1-1 by owners request for 65  
 2. 21-1-2-1 from 21-1-2 and 21-1-1-1  
 3. 21-1-2-1 and 21-1-2-2 for tax purposes only. Not properly plotted.



MAP 10

MAP 22

MAP 41

- LEGEND
- County Boundary
  - Map Boundary
  - Line of Ownership
  - Original Platted Line
  - District Line
  - Notarized Right of Way
  - City Limit
  - Easement
  - Stream
  - CHURCH
  - SCHOOL
  - CEMETERY

ROYAL LAKE ESTATES, PAR 70 - 104  
 KINMORE PARK 1986 PH. TWO (PAR 64 - 69)  
 KINMORE PARK 1982 PH. ONE  
 CHARLES BAKER SUB  
 FLOYD LESTER ESTATES P.B. "A" PG. 155

TAX VALUATION MAP	LAND LOT 213 - 215	MAP NO.
ROCKDALE COUNTY	233-235, 246 - 248	21
GEORGIA	DISTRICT 16	
	OS. MAP D. 116	
DATE: DEC. 11, 1987	LAST REVISION: 2004	PHOTO NO.: 102-104