

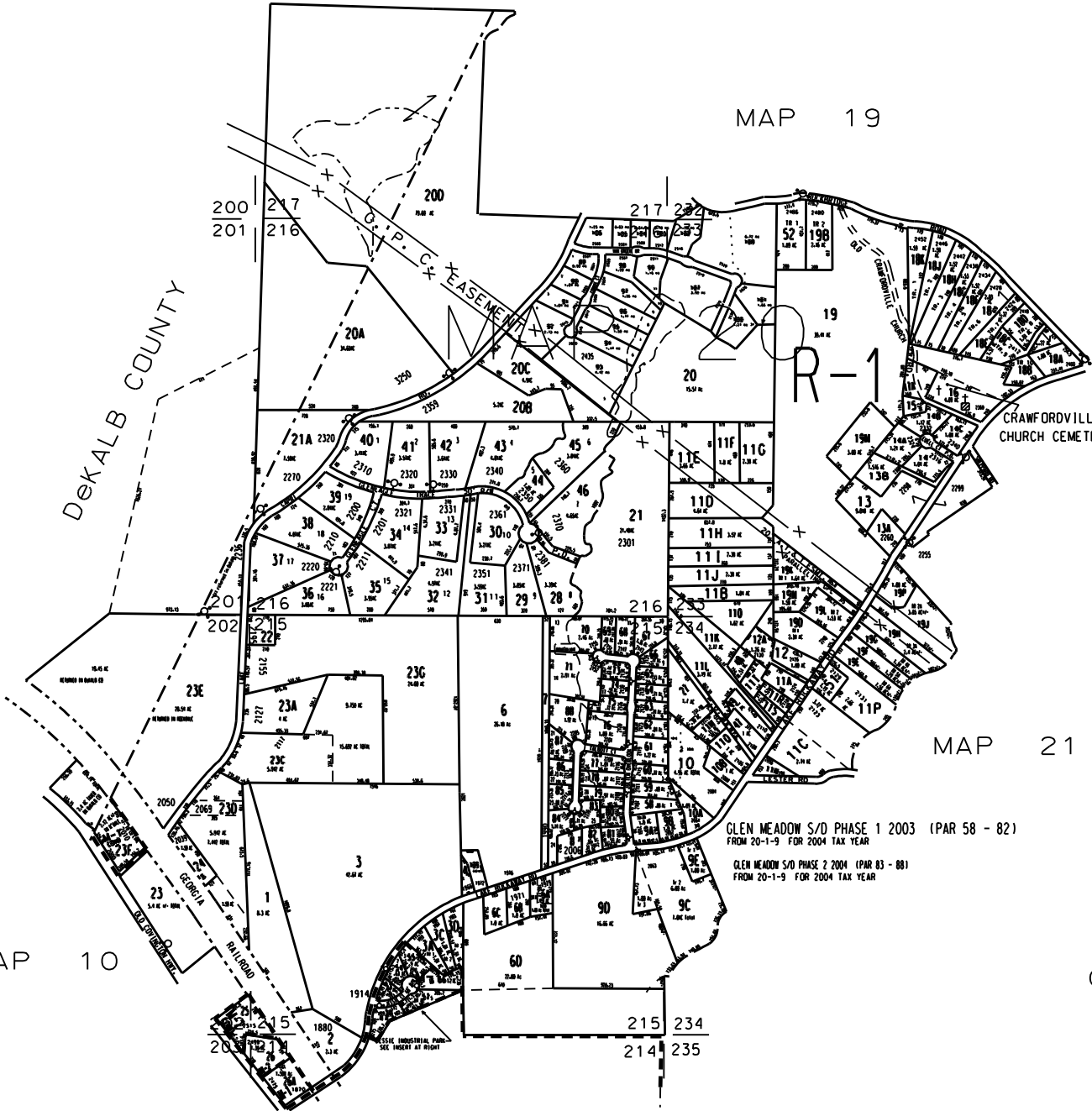
THIS MAP HAS BEEN COMPILED FROM THE MOST AUTHENTIC INFORMATION AVAILABLE, AND NEITHER ROCKDALE COUNTY NOR HUNNICUTT AND ASSOCIATES, INC. ASSUME RESPONSIBILITY FOR ERRORS OR OMISSIONS

MAP 19

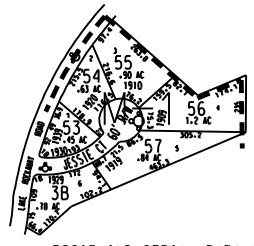
MAP 38



DEKALB COUNTY



- NOTES:
1. PARCEL 20-1-17 COMBINED WITH 20-1-16 FOR 2001 PER ELS (US 12-12-00)
 2. PARCEL 20-1-9D OUT OF 20-1-9 FOR 2002 PER DEED 1962/318 1-8-01 (US 6-28-01)
 3. 20-1-236 FROM 20-1-23 DEED 2138/154 6/29/01
 4. 15-186 ac. from 20-1-236 to 20-1-236 deed 2220/06 5/25/03 recorded jan 02 and deed 2220/08 12/26/08 recorded jan 02
 5. 4.942 ac. from 20-1-236 to 20-1-236 deed 2150/129 recorded now 01
 6. 0.541 ac. from 20-1-4 to 20-1-4a deed 2130/13 6/18/03 plat 8165
 7. 1.02 ac. from 20-1-236 to 20-1-236 & 1.02 ac. from 20-1-236 to 20-1-236 deed 2250/201 & 2250/204 12/19/04
 8. 20-1-2 deleted to Glen Meadows S/D Phase 2 plat 32/125 2004
 9. lot 15 of Glen Meadows S/D deleted & lot 13 & 14 changed as per revised plat 32/148
 10. 20-1-20 out of 20-1-236 to deed 3225/05
 11. Lake Drive Estates Unit 044 from 20-1-194 and 20-1-20 (Par. 83 - 108 for 2001



JESSIE INDUSTRIAL PARK 1991
SCALE = 2X MAP SCALE

- LEGEND
- County Boundary
 - Map Boundary
 - Limit of Ownership
 - Original Platted Line
 - District Line
 - Railroad Right of Way
 - City Limit
 - Easement
 - Stream
 - CHURCH
 - SCHOOL
 - CEMETERY

TAX VALUATION MAP	LAND LOT 201 - 203	MAP NO.
ROCKDALE COUNTY	214 - 217, 232 - 234	20
GEORGIA	DISTRICT 16	
	C. M. D. 476	
DATE: DEC. 1, 1987	LAST REVISION 2003	PHOTO NO. BSE-102