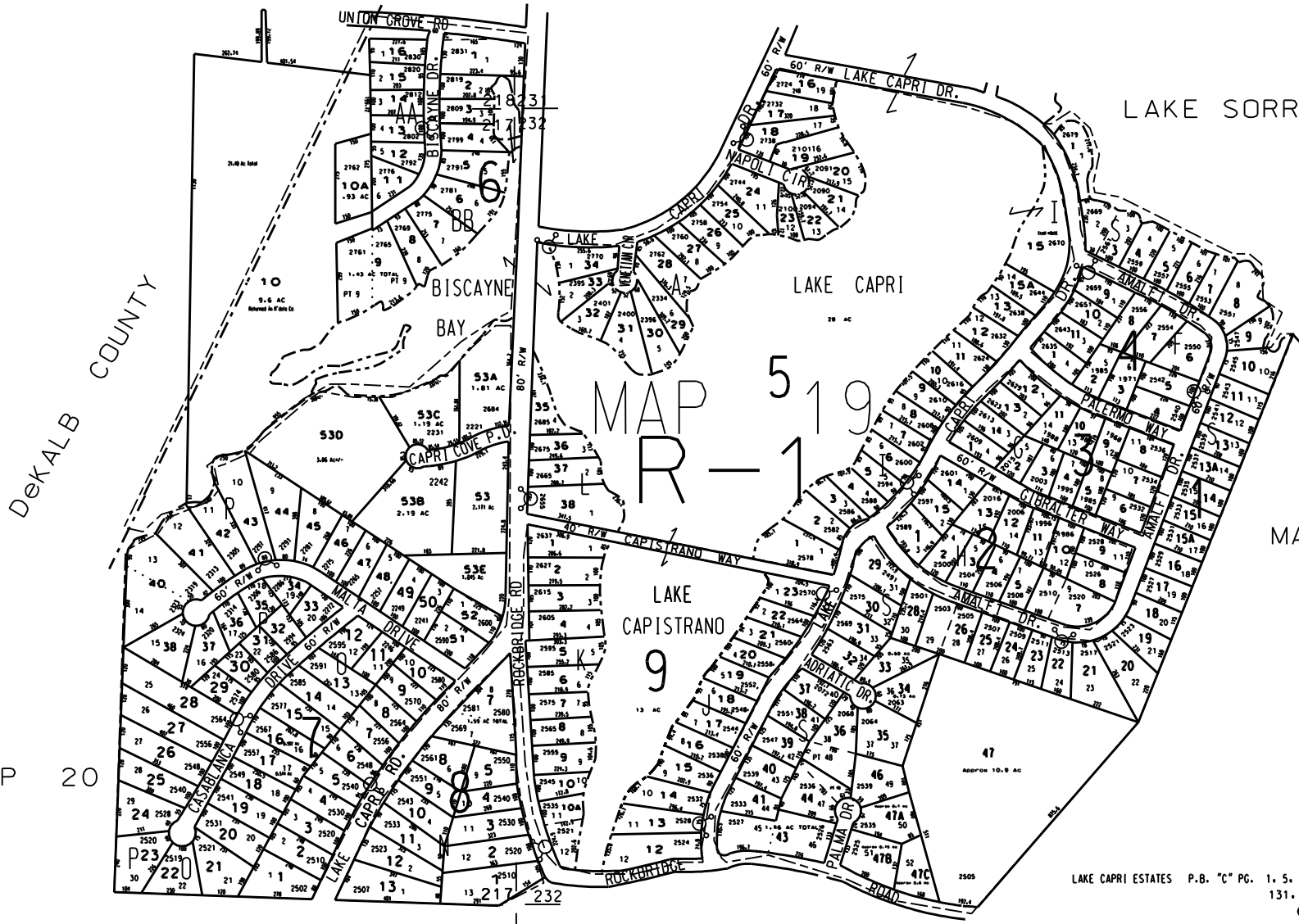


MAP 18



THIS MAP HAS BEEN COMPILED FROM THE MOST AUTHENTIC INFORMATION AVAILABLE, AND NEITHER ROCKDALE COUNTY NOR HUNNICUTT AND ASSOCIATES, INC. ASSUME RESPONSIBILITY FOR ERRORS OR OMISSIONS.

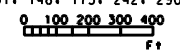
Note
 1. 19-1-51C from 19-1-53 by plat 32765 to 04 tax year
 2. 19-1-38 from 19-1-53 and 32701A, 50/004
 3. 19-1-53B from 19-1-53 and 3290716, 11/19/04
 4. 19-1-16A combined with 19-1-16 by owners request 2004



MAP 20

- LEGEND
- County Boundary
 - Map Boundary
 - Limit of Ownership
 - Original Platted Line
 - District Line
 - Railroad Right of Way
 - City Limit
 - Easement
 - Stream
 - CHURCH
 - SCHOOL
 - CEMETERY

LAKE CAPRI ESTATES P.B. "C" PG. 1, 5, 87, 91, 117A, 117B, 117C, 131, 148, 173, 242, 290



MAP 20

TAX VALUATION MAP	LAND LOT	217, 218	MAP NO.
ROCKDALE COUNTY		231 & 232	19
GEORGIA	DISTRICT	16	
	C. M. O.	476	