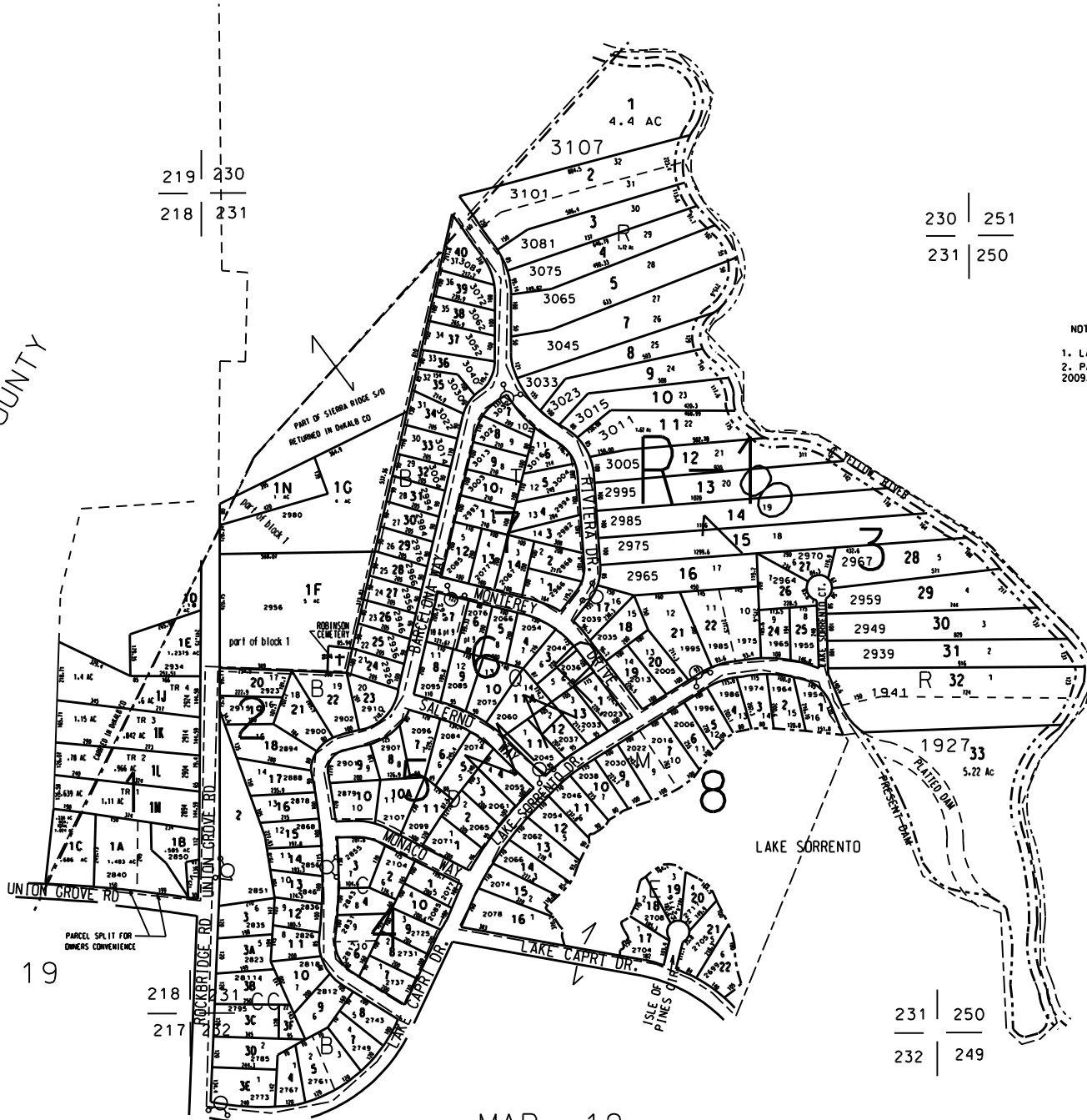


THIS MAP HAS BEEN COMPILED FROM THE MOST AUTHENTIC INFORMATION AVAILABLE AND NEITHER ROCKDALE COUNTY NOR HERRICUTT AND ASSOCIATES, INC. ASSUME RESPONSIBILITY FOR ERRORS OR OMISSIONS



DeKALB COUNTY



219 | 230  
218 | 231

230 | 251  
231 | 250

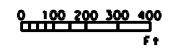
- NOTES:
1. LAKE CAPRI S/D - 1974
  2. PARCEL 18-1-1N OUT OF 18-1-1G FOR 2002 PER DEED 2009/294 3-14-01 (US 6-28-01)

MAP 17

MAP 19

MAP 19

231 | 250  
232 | 249



- LEGEND
- County Boundary
  - Map Boundary
  - Limit of Ownership
  - Original Platted Line
  - District Line
  - Railroad Right of Way
  - City Limit
  - Stream
  - Church
  - School
  - Cemetery

TAX VALUATION MAP	LAND LOT 217, 218	MAP NO.
ROCKDALE COUNTY	230-232, 249-251	18
GEORGIA	DISTRICT 16	
	G.M.D. 476	
DATE: DEC. 1, 1987 LAST REVISION 2001		PHOTO NO. BSE - 101