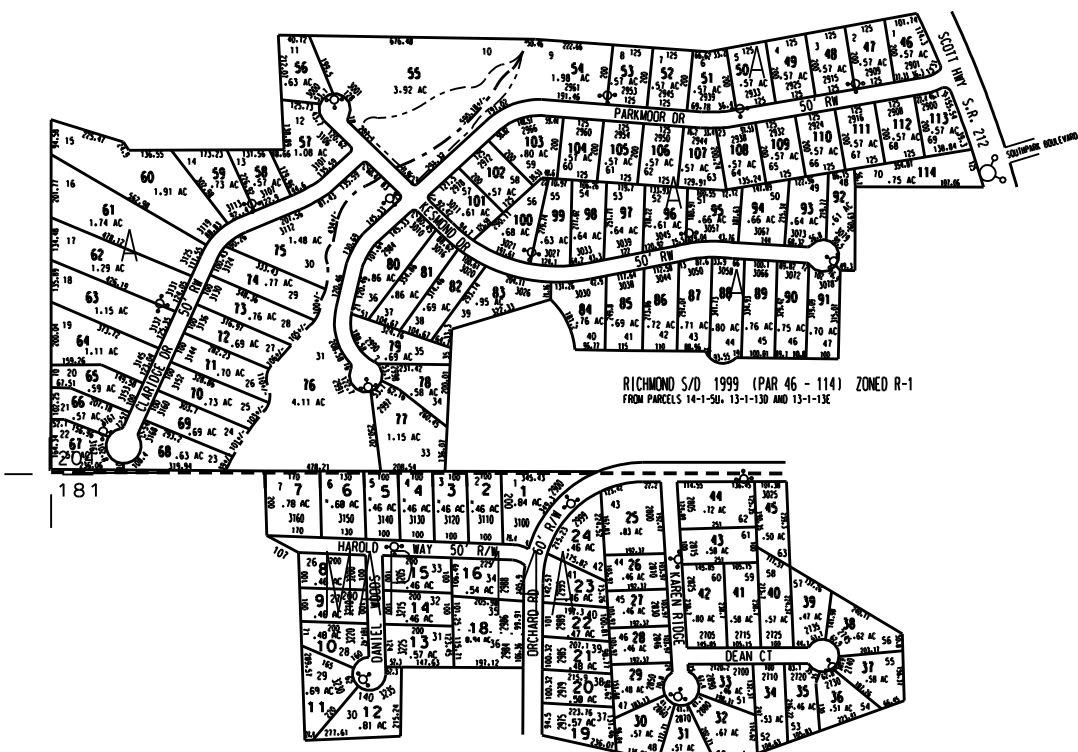




THIS MAP HAS BEEN COMPILED FROM THE MOST AUTHENTIC INFORMATION AVAILABLE, AND NEITHER ROCKDALE COUNTY NOR HUNNICUTT AND ASSOCIATES, INC., ASSUME RESPONSIBILITY FOR ERRORS OR OMISSIONS

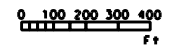


RICHMOND S/D 1999 (PAR 46 - 114) ZONED R-1 FROM PARCELS 14-1-50, 13-1-130 AND 13-1-13E

ROSS MANOR PHASE 1 1996 (PAR 1 - 24) ZONED R-1 COMD FROM PARCEL 14-1-9C
 ROSS MANOR PHASE 2 1998 (PAR 25 - 45) ZONED R-1 COMD

LEGEND

- ZONING
- County Boundary
- Map Boundary
- Limit of Ownership
- Original Platted Line
- District Line
- Ratified Right of Way
- City Limit
- Easement
- Stream
- CHURCH
- SCHOOL
- CENETARY



TAX VALUATION MAP	LAND LOT	FBI	MAP NO.
ROCKDALE COUNTY	DISTRICT	11	14A
GEORGIA			
DATE: 1996	LAST REVISION: 1999	PHOTO NO.	