

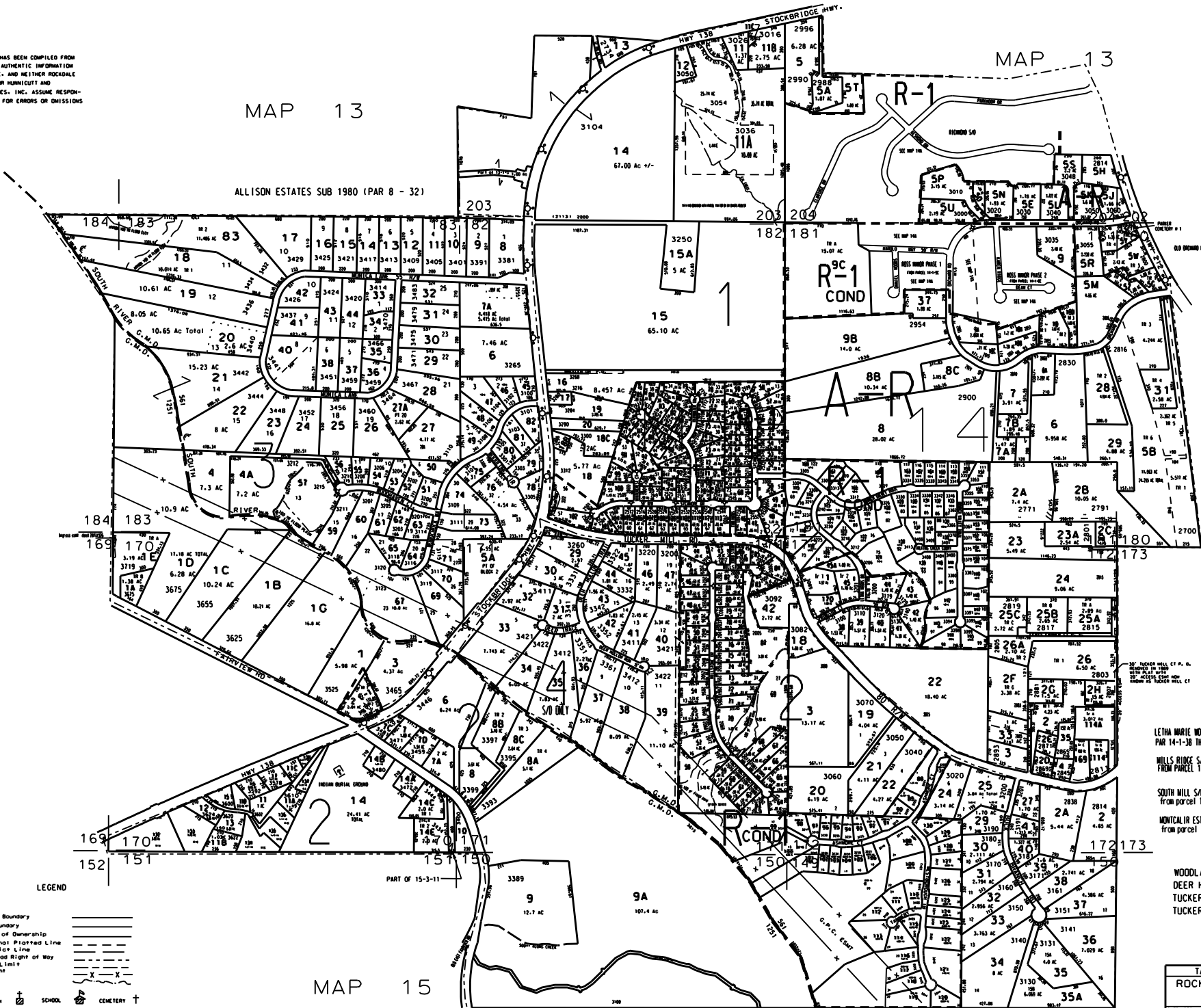
THIS MAP HAS BEEN COMPILED FROM THE MOST AUTHENTIC INFORMATION AVAILABLE, AND NEITHER ROCKDALE COUNTY NOR MUNICIPALITY AND ASSOCIATES, INC. ASSUME RESPONSIBILITY FOR ERRORS OR OMISSIONS

MAP 13

MAP 29



ALL ISON ESTATES SUB 1980 (PAR 8 - 32)



MAP 30

- NOTES:
1. 14-1-54 OUT OF 14-1-50 (PAR 99 PER DEED 1514/219 5-11-50)
 2. 14-1-78 OUT OF 14-1-72 (PAR 100 PER DEED 1935/131 11-13-2000)
 3. 14-1-50 FROM 14-1-24 (DEED 2118/106 4/1/50)
 4. 14-1-50 FROM 14-1-24 (DEED 2118/106 4/1/50)
 5. 53.36 AC FROM 14-2-14 (DEED 2107/133 5/12/03)
 6. 14-2-4 (PAR 2-23) RECAP R-1 COND. AND 2002/36 ORDINANCE # 0-2002-03
 7. 14-1-18 FROM 14-1-2 (DEED 3107/193 5/14/04)
 8. SOUTH MILL S/O FROM 14-1-18, 2004
 9. 6.52 AC FROM 14-1-2 (DEED 3192/158 8/17/04)
 10. RETURNED TO R-1 CONDITION CASE # 2004/79 ORDINANCE # 0-2004-23
 11. DEED 141/164 DEDICATED TO ROCKDALE COUNTY 11/9/04 (AS PER PAR 137)
 12. 14-1-114 FROM 14-2-2 (DEED 3324/70 1/21/05)
 13. 1.00 AC FROM 14-1-1 TO 14-1-45 (DEED 3385/291 6/30/04 RECORDED 3/2/05)

- LETHA MARIE WOODS S/O UNIT 1 2000
PAR 14-1-38 THRU 45 FROM PAR 14-1-1
- MILLS RIDGE S/O 2002 (PAR 14-2-43 THRU 87)
FROM PARCEL 14-2-3 & 5C
- SOUTH MILL S/O 2004 (PAR 14-1-46 THRU 14-1-114)
FROM PARCEL 14-1-10A
- MONTICLIAR ESTATES S/O 2006 (PAR 14-2-88 THRU 14-2-131)
FROM PARCEL 14-2-23
- WOODLAND HILLS 1988 (PAR 45 - 83)
DEER HOLLOW 1986 (PAR 29 - 47 BLOCK 4)
TUCKER MILL FOREST U 3 1986 (PAR 29 - 41)
TUCKER MILL FOREST U 1 & 2 1985

TAX VALUATION MAP	LAND LOT 202 - 205	MAP NO.
ROCKDALE COUNTY	100-183-170-173	14
GEORGIA	DISTRICT 1 T	
	C. O. D. 561 & 1251	

DATE: DEC. 1, 1997 LAST REVISION: 2005 PHOTO NO. 652 - 93

LEGEND

- County Boundary
- Map Boundary
- Limit of Ownership
- Original Platted Line
- District Line
- Railroad Right of Way
- City Limit
- Easement
- Stream

CHURCH SCHOOL CEMETERY

MAP 15