

THIS MAP HAS BEEN COMPILED FROM THE MOST AUTHENTIC INFORMATION AVAILABLE, AND NEITHER ROCKDALE COUNTY NOR HURRICUTT AND ASSOCIATES, INC. ASSUME RESPONSIBILITY FOR ERRORS OR OMISSIONS.

- NOTES:
1. 13-1-130 OUT OF 13-1-13C FOR '99 PER DEED 1514/223 511-98
 2. 13-1-13E OUT OF 13-1-13 FOR '99 PER DEED 1514/221 5-11-98
 3. 13-1-29M OUT OF 13-1-29D FOR 2001 PER DEED 1943/117 11-29-00 (US 1-25-01)
 4. 13-1-32A FROM 13-1-32 BY PLAT 31/93 FOR 03
 5. 13-1-32B FROM 13-1-32 BY DEED 2252/319 11/26/02
 6. 13-1-32C FROM 13-1-32 BY PLAT 31/97 FOR 03
 7. 13-1-15, 14B, 14C & 12A COMBINED WITH 13-1-14 FOR 2004
 8. 13-1-18C FROM 13-1-18 BY PLAT 32/21 2003
 9. 13-1-34B FROM 13-1-34 DEED 2981/7 10/21/03
 10. 13-1-25D FROM 13-1-25B DEED 2559/25 10/24/03
 11. 13-1-1L FROM 13-1-18 DEED 3328/286 12/15/04
 12. 13-1-32B COMBINED WITH 13-1-32 BY OWNER'S REQUEST
 13. 13-1-7H FROM 13-1-7B BY PLAT 32/67 2002
 14. 10.03 AC FROM 13-1-5A TO CDDI DEED 4503/226-2301

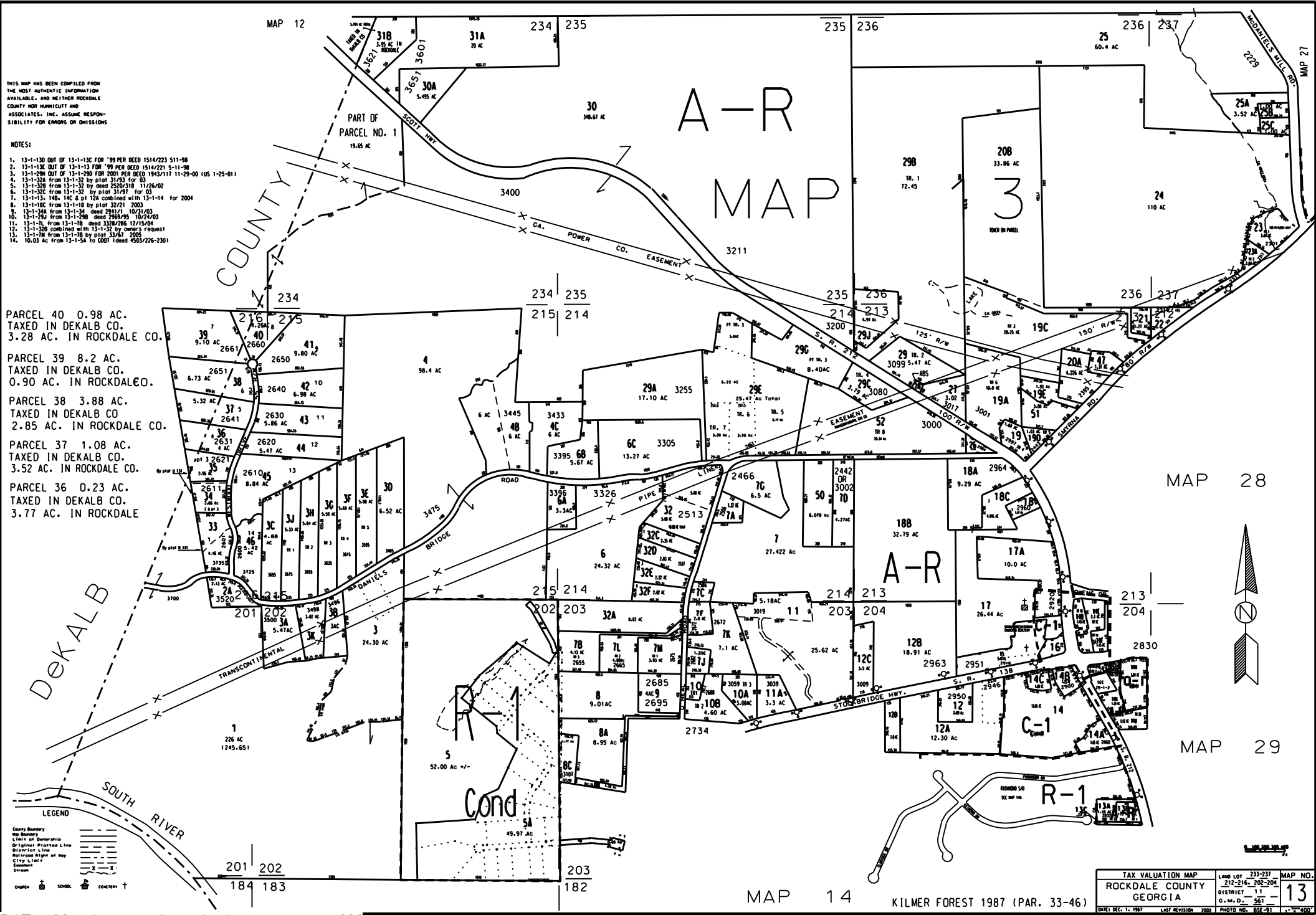
PARCEL 40 0.98 AC.
TAXED IN DEKALB CO.
3.28 AC. IN ROCKDALE CO.

PARCEL 39 8.2 AC.
TAXED IN DEKALB CO.
0.90 AC. IN ROCKDALE CO.

PARCEL 38 3.88 AC.
TAXED IN DEKALB CO.
2.85 AC. IN ROCKDALE CO.

PARCEL 37 1.08 AC.
TAXED IN DEKALB CO.
3.52 AC. IN ROCKDALE CO.

PARCEL 36 0.23 AC.
TAXED IN DEKALB CO.
3.77 AC. IN ROCKDALE



DEKALB COUNTY

LEGEND

- County Boundary
- Map Boundary
- Limit of Jurisdiction
- Original Plat/Plan Line
- Deed/Plat Line
- Relocated Right of Way
- City Limit
- Easement
- Stream

TAX VALUATION MAP	LAND LOT 233-237	MAP NO.
ROCKDALE COUNTY	212-216-202-204	13
GEORGIA	DISTRICT 11	
	G. M. D. 561	
DATE DEC. 1, 1987	LAST REVISION 2003	PHOTO NO. BSE-91