

THIS MAP HAS BEEN COMPILED FROM THE MOST AUTHENTIC INFORMATION AVAILABLE, AND NEITHER ROCKDALE COUNTY NOR HORNICUTT AND ASSOCIATES, INC. ASSUME RESPONSIBILITY FOR ERRORS OR OMISSIONS

MAP 11



DEKALB COUNTY

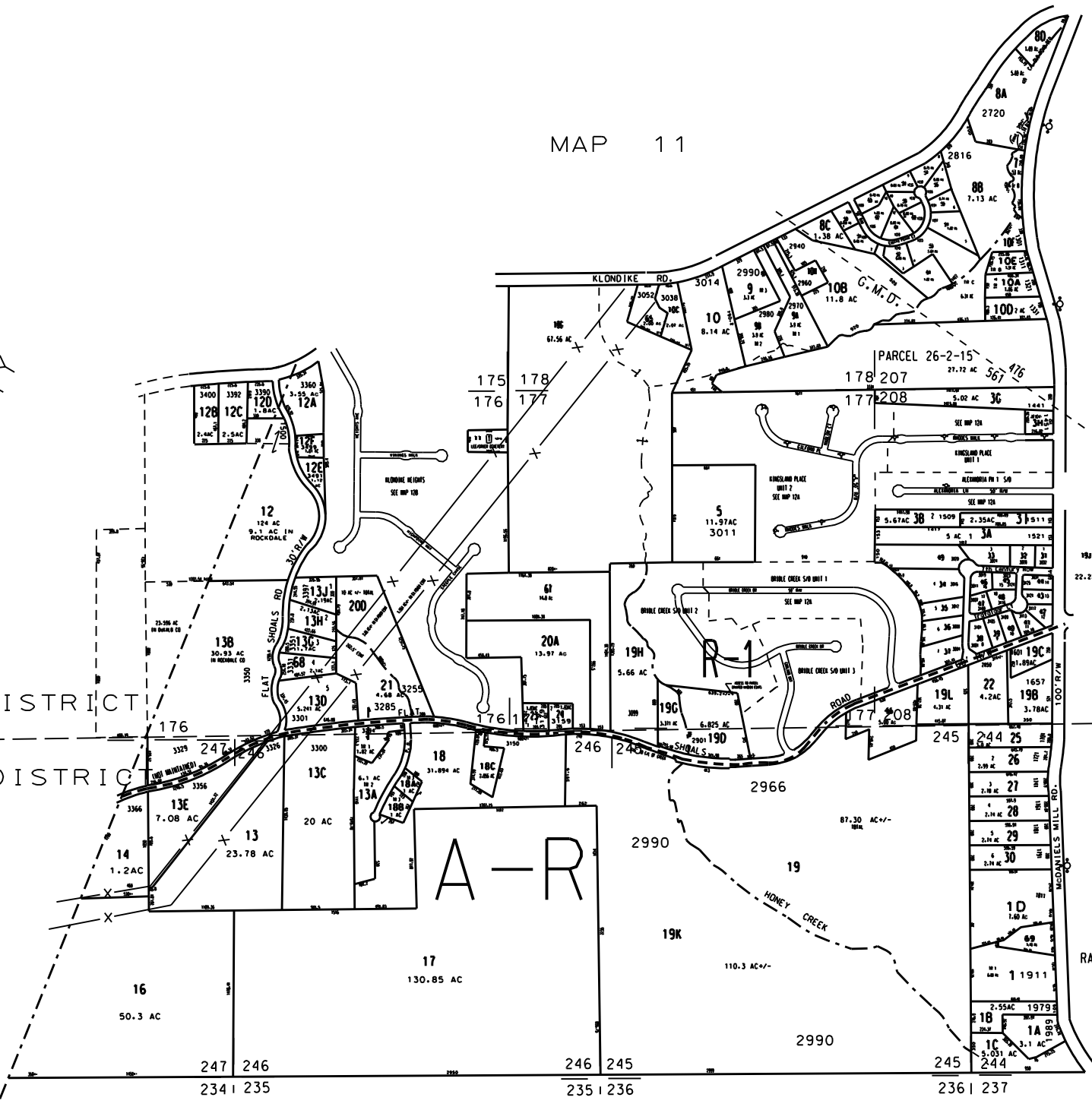
16 TH. DISTRICT

11 TH. DISTRICT

**LEGEND**

- County Boundary
- Map Boundary
- Limit of Ownership
- Original Platred Line
- District Line
- Railroad Right of Way
- City Limit
- Easement
- Stream

CHURCH    SCHOOL    CEMETERY



MAP 26

- NOTES:**
1. PARCEL 12-1-10 OUT OF 12-1-1 FOR 1999 PER DEED 1564/154 8-21-98 IUS 11-20-98
  2. PARCEL 12-1-12F OUT OF 12-1-12A FOR 1999 PER DEED 1768/178 10-4-99 (CORRECTED 7-12-2000 USJ)
  3. PARCEL 12-1-19J CREATED FROM DISPUTED LEGAL DESCRIPTION. CORRECTED BUT NOT REMOVED FROM MAP. US 8-22-00
  4. 12-1-100B COMBINED WITH 10-1-100 FOR 02 BY OWNERS REQUEST
  5. 4.31 ac from 12-1-19 to 12-1-19L deed 2238/311 1-31-02
  6. 12-1-18C from 12-1-18 deed 2991/322 2/6/02
  7. 0.14 ac from 12-1-7 to 12-1-8a deed 2993/45 1/20/04
  8. 12-1-18 should be 23.33 ac as per plat
  9. Knight's Bridge S/D out of 19J per plat
  10. Castle Point S/D (Parcels 50 - 64) out of 12-1-8 for 2007

MAP 27

CHORYAH MOUND PH. 1 1988 (PAR. 23 - 24)  
RAY C. COLLINS SUB. 1987 (PAR. 130, 13F-13J)

TAX VALUATION MAP	LAND LOT 207-208	MAP NO.
ROCKDALE COUNTY	244-247, 175-178	12
GEORGIA	DISTRICT 11 & 16	
	C. M. O. 476 & 1251	
DATE DEC. 1, 1987	LAST REVISION 2001	PHOTO NO. 85C 851 911