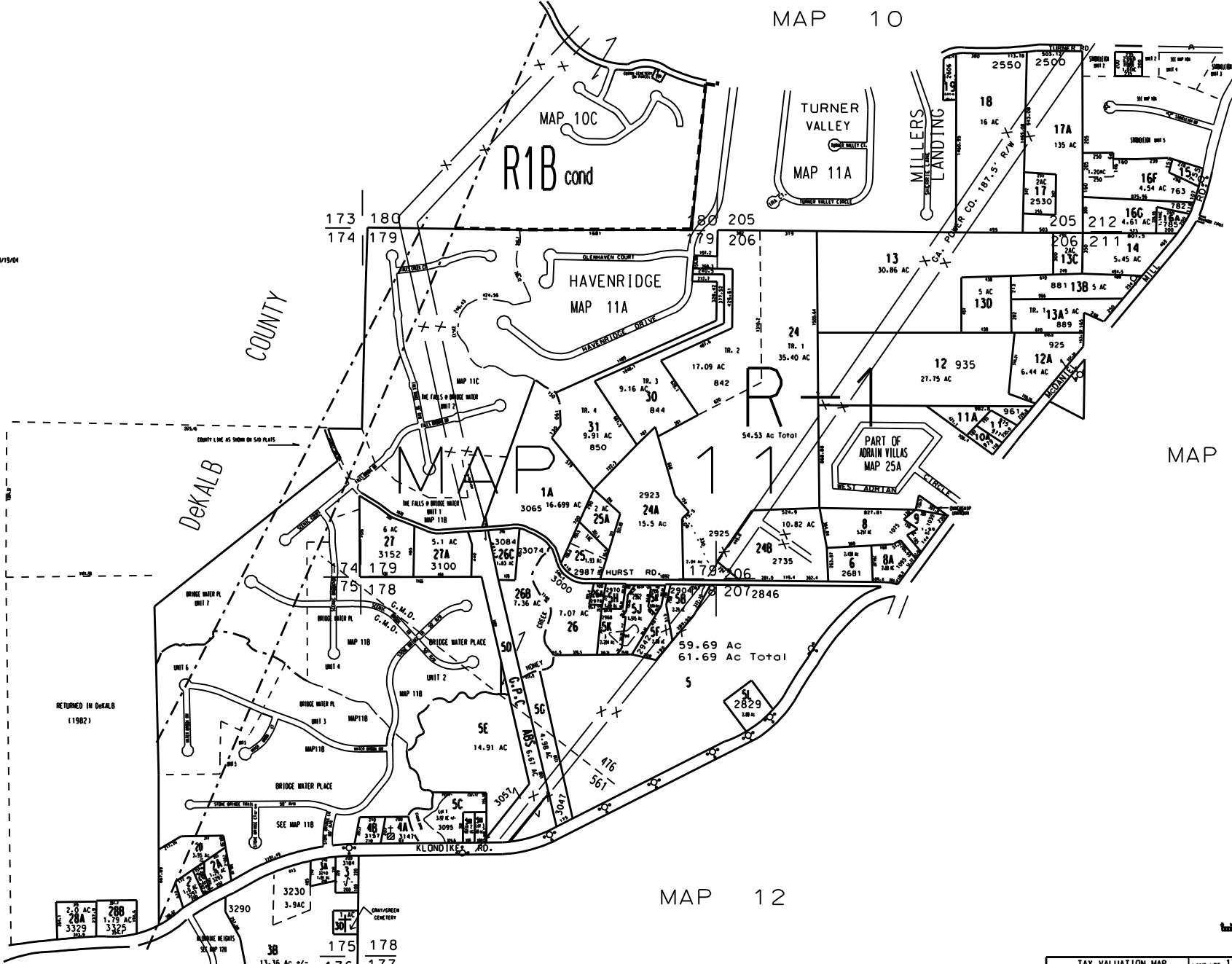


THIS MAP HAS BEEN COMPILED FROM THE MOST AUTHENTIC INFORMATION AVAILABLE, AND NEITHER ROCKDALE COUNTY NOR HURRICUTT AND ASSOCIATES, INC. ASSUME RESPONSIBILITY FOR ERRORS OR OMISSIONS

Notes
 1. 0.27 Ac from 11-1-20 to 110-1-15. dmd 0316/17/ 4/22/04
 2. 11-1-51 & 11-1-54 from 11-1-54 by plat 32/151
 3. 11-1-20 from 11-1-20 & 11-1-20 from 11-1-24. dmd 3266/313 10/19/04

MAP 10



MAP 25

MAP 12

LEGEND

- C. M. D. Boundary
- County Boundary
- Map Boundary
- Limit of Ownership
- Original Platted Line
- District Line
- Railroad Right of Way
- City Limit
- Easement
- Stream
- CHURCH
- SCHOOL
- CEMETERY

2.0 AC ±	288
28A	1.79 AC ±
3329	3325
TOTAL 3.9 AC ±	

38	175	178
13.36 AC ±	176	177
TOTAL 8.39 AC ±		

TAX VALUATION MAP	LAND LOT 174-176	MAP NO.
ROCKDALE COUNTY	178-180, 205-212	11
GEORGIA	DISTRICT 16	
	C. M. D. 416 E 561	
DATE REC. 1. 1987 LAST REVISION 2004 PHOTO NO. REC 104, 106, 107 1" = 400'		