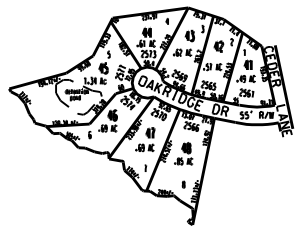


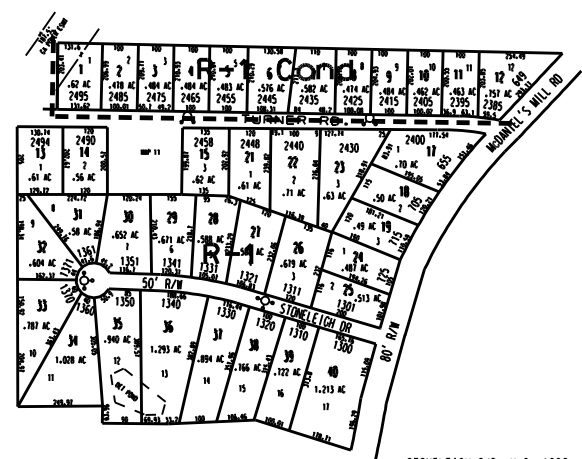
THIS MAP HAS BEEN COMPILED FROM THE MOST AUTHENTIC INFORMATION AVAILABLE, AND NEITHER ROCKDALE COUNTY NOR MUNICIPALITY AND ASSOCIATES, INC. ASSUME RESPONSIBILITY FOR ERRORS OR OMISSIONS.



ABBOTT S/D 1999 UNIT 2 SECTION 3 (PAR 41-48) FROM PAR 10-9-9

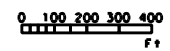


STONELEIGH S/D 1995 (PAR 1 - 12)  
PAGE OF PARCELS 10-10-4



**LEGEND**

County Boundary	— — — — —
Map Boundary	— — — — —
Limit of Ownership	— — — — —
Original Platred Line	— — — — —
District Line	— — — — —
Railroad Right of Way	— — — — —
City Limit	— — — — —
Easement	— — — — —
Stream	— — — — —
CHURCH	+
SCHOOL	+
CEMETERY	+



- STONELEIGH S/D U 2 1996 (PAR 13 - 15) OUT OF PARCELS 11-1-16C
- STONELEIGH S/D U 3 1996 (PAR 17 - 19) OUT OF PARCELS 11-1-16
- STONELEIGH S/D U 4 1996 (PAR 21 - 23) OUT OF PARCELS 10A-1-16 & 20
- STONELEIGH S/D U 5 1997 (PAR 24 - 40) OUT OF PARCELS 10A-1-16 & 20 AND 11-1-16B & 11-1-16C

TAX VALUATION MAP		LAND LOT 212	MAP NO.
ROCKDALE COUNTY		DISTRICT 16	10A
GEORGIA		G.M.O. 476	
DATE: AUG 1995	LAST REVISION: 2001	PHOTO NO.	