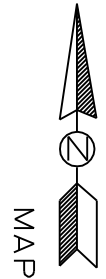


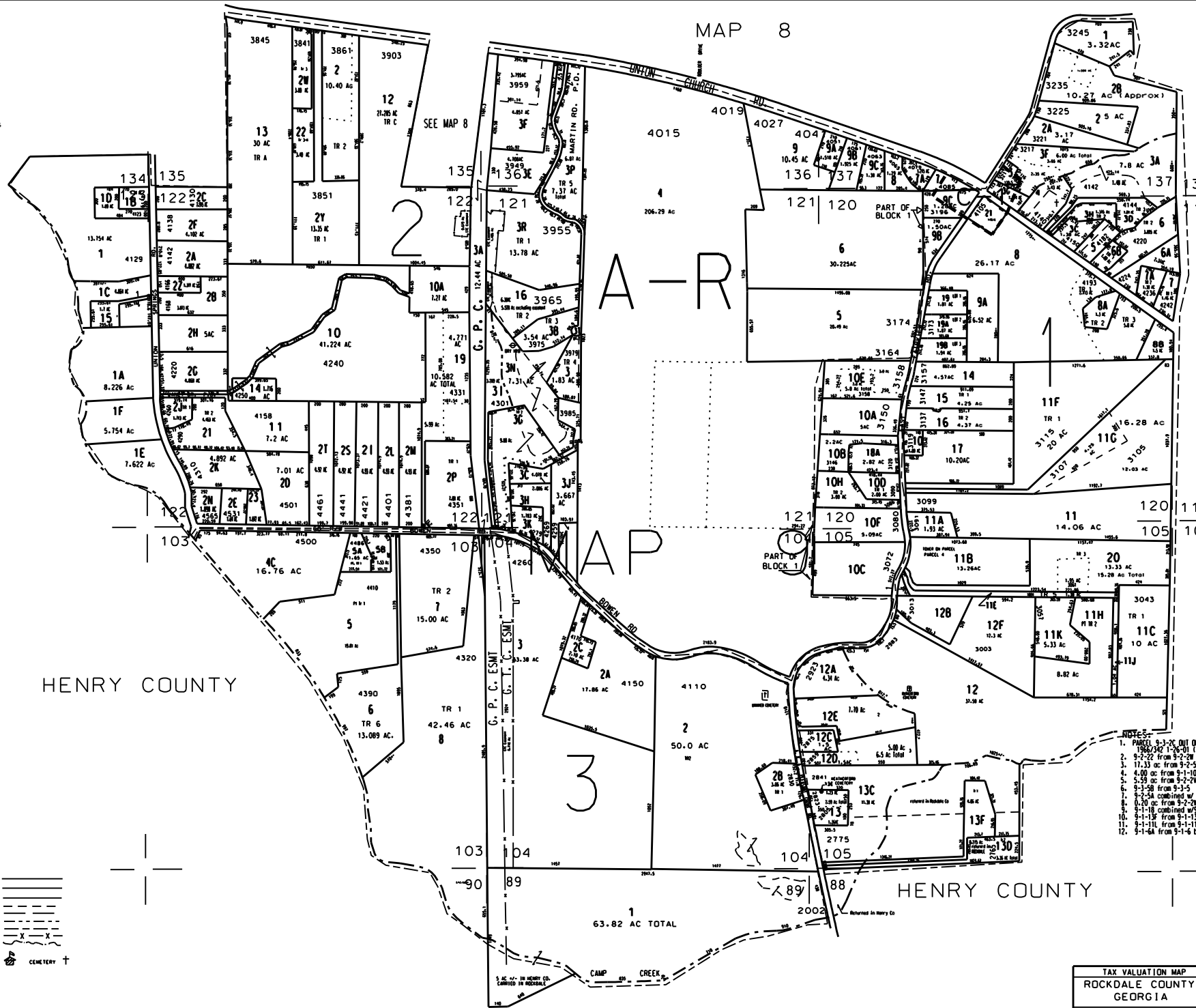
MAP 8



MAP 15

MAP 16

THIS MAP HAS BEEN COMPILED FROM THE MOST AUTHENTIC INFORMATION AVAILABLE, AND NEITHER ROCKDALE COUNTY NOR HURRICUT ASSOCIATES, INC. ASSUME RESPONSIBILITY FOR ERRORS OR OMISSIONS.



HENRY COUNTY

HENRY COUNTY

A - R

3

63.82 AC TOTAL

- NOTES:
1. PARCELS 9-1-2C OUT OF 9-1-2A FOR 2002 PER DEED 1988/242 1-26-01 TIS 6-28-01
 2. 9-2-22 from 9-2-28 by plat 31/92 for 03
 3. 11.33 ac from 9-2-5 to 9-2-5B deed 2518/322 1/21/03
 4. 4.00 ac from 9-1-10 to 9-1-17 deed 2141/133 5/21/03
 5. 5.58 ac from 9-2-29 to 9-2-29 deed 3875/259 8/21/03
 6. 3-1-50 from 9-1-5 deed 2138/108 1/21/03
 7. 7-1-54 combined w/ 9-2-5 by owners request for 04
 8. 9-10 ac from 9-2-28 to 9-2-22 plat 32/24 2003
 9. 9-1-18 combined w/ 9-1-18A by owners request for 2005
 10. 9-1-13 from 9-1-13 deed 3206/69 6/17/04
 11. 9-1-11 from 9-1-11 deed 3557/5 10/4/04
 12. 9-1-64 from 9-1-6 by plat 31/7 64 2005

LEGEND

- County Boundary
- Map Boundary
- Limit of Ownership
- Original Platted Line
- Disturber Line
- Railroad Right of Way
- City Limit
- Easement
- Stream

CHURCH + SCHOOL + CEMETERY +

TAX VALUATION MAP	LAND LOT 88-90-103	MAP NO.
ROCKDALE COUNTY	105, 120-123, 136, 137	9
GEORGIA	DISTRICT 11	
	G. M. O. 1251	