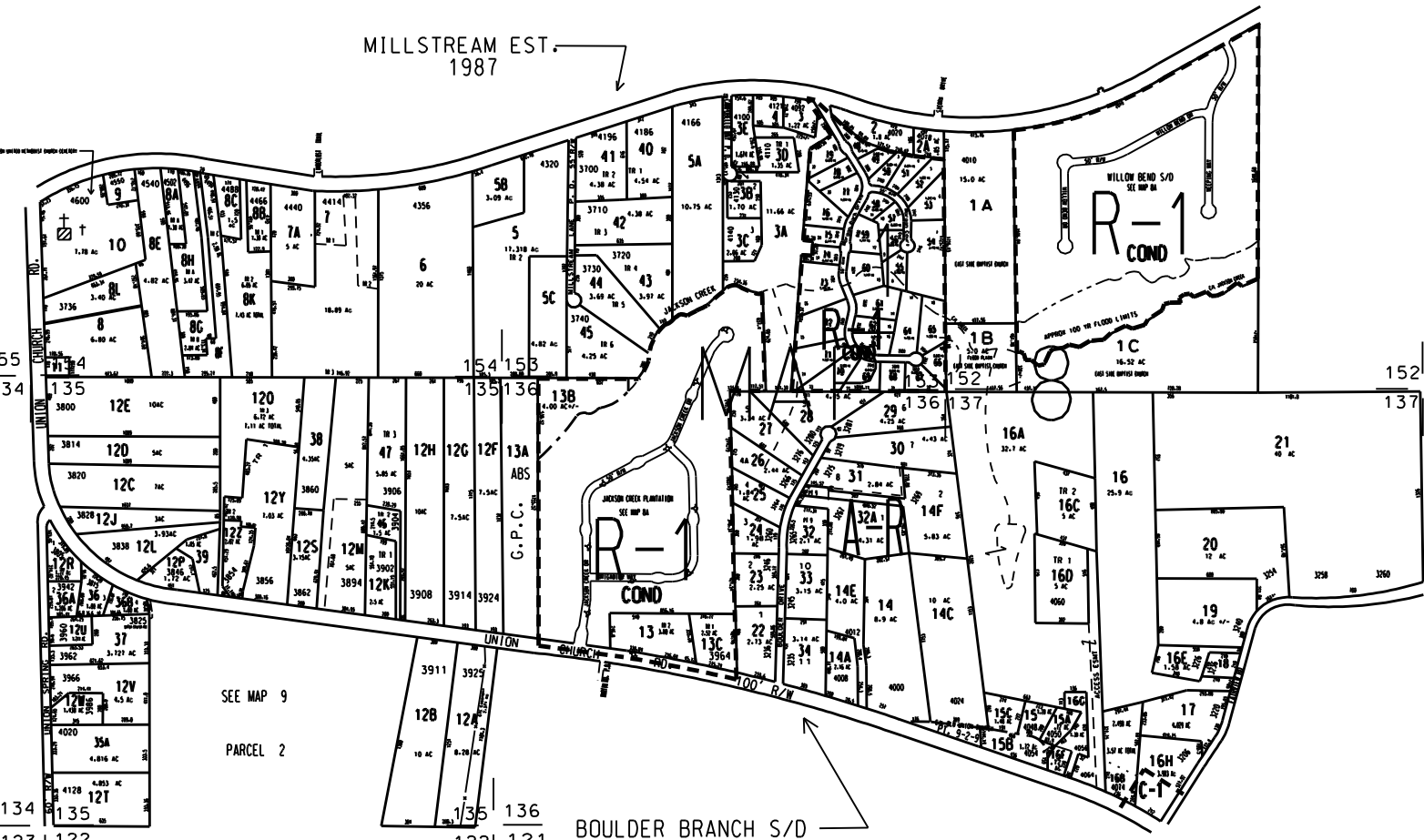


MAP 7



THIS MAP HAS BEEN COMPILED FROM THE MOST AUTHENTIC INFORMATION AVAILABLE. AND NEITHER ROCKDALE COUNTY NOR HUNNICUTT AND ASSOCIATES, INC. ASSUME RESPONSIBILITY FOR ERRORS OR OMISSIONS

MILLSTREAM EST. 1987



MAP 5

MAP 15

MAP 9

- NOTES:
1. PARCEL B-1-BK OUT OF B-1-BB FOR 2000 PER PLAT 25/6, 10/21/99 US
  2. PARCEL B-1-3F OUT OF B-1-3A FOR 2000 PER DEED 1787/187, 1/11/2000 US
  3. Parcel B-1-1C from B-1-13 deed 2402/25, 2/20/02
  4. B-1-4A deleted and combined with B-1-4 in deed 2003/214, 7/14/2001
  5. B-1-3F receded from B-1 to B-1 cond case # 2004/26 ordinance # B-2004-26

SEE MAP 9  
PARCEL 2

BOULDER BRANCH S/D 1976

- LEGEND
- County Boundary
  - Map Boundary
  - Limit of Ownership
  - Original Platred Line
  - Division Line
  - Railroad Right of Way
  - City Limit
  - Easement
  - Stream
- CHURCH + SCHOOL CEMETERY †

TAX VALUATION MAP	LAND LOT 121 - 123	MAP NO.
ROCKDALE COUNTY	124 - 126, 154 - 155	8
GEORGIA	DISTRICT 11	
DATE: DEC. 1, 1987	LAST REVISION: 2004	PHOTO NO. 892 16, 95