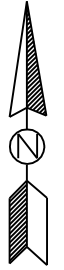


THIS MAP HAS BEEN COMPILED FROM THE MOST AUTHENTIC INFORMATION AVAILABLE, AND NEITHER ROCKDALE COUNTY NOR HUMPHRETT AND ASSOCIATES, INC. ASSUME RESPONSIBILITY FOR ERRORS OR OMISSIONS

MAP 6

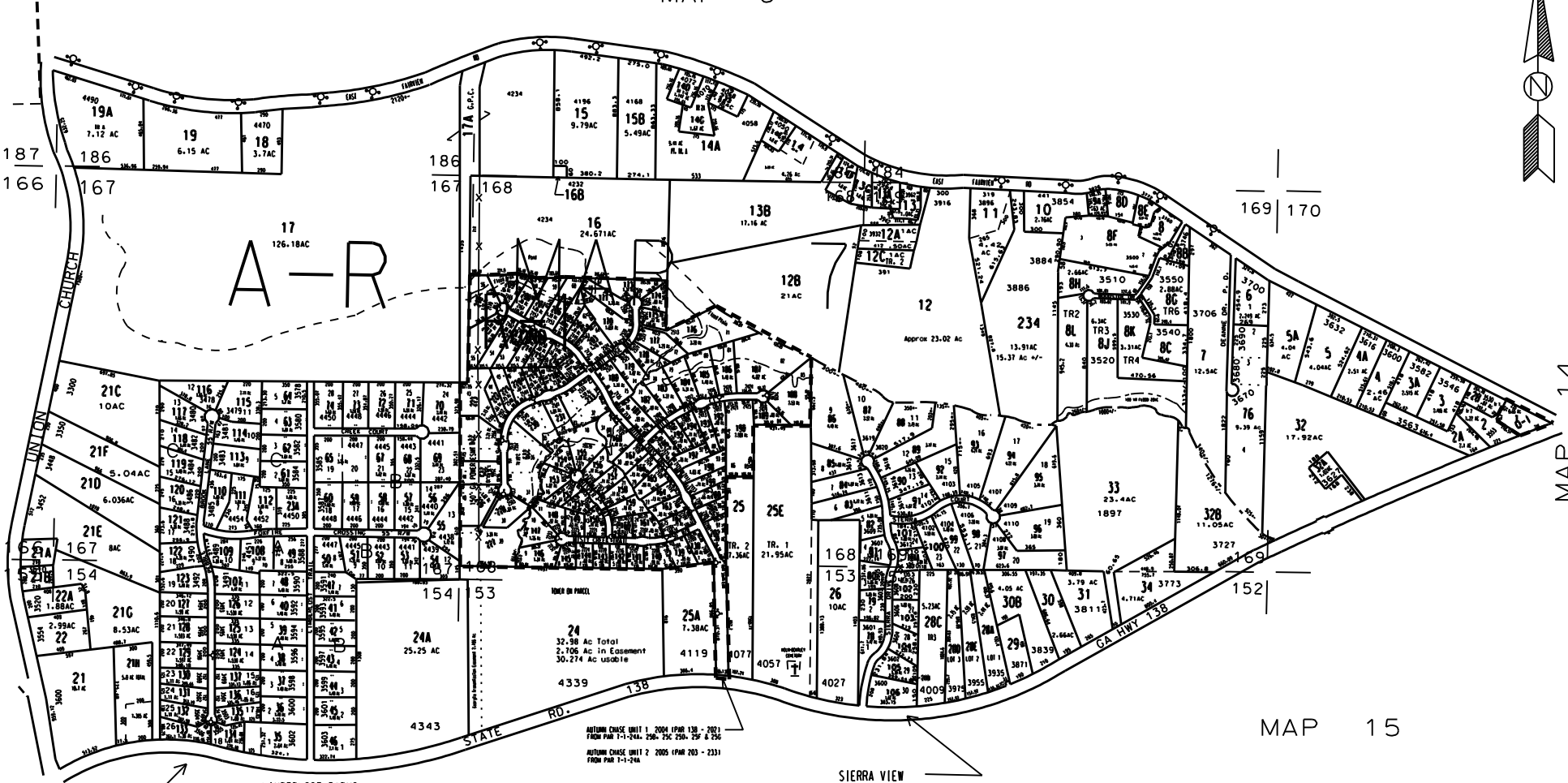


MAP 4

MAP 5

MAP 14

MAP 15



AUTUMN CHASE UNIT 1 2004 (PAR 130 - 202)  
FROM PAR 1-1-24A, 250, 25C, 25D, 25F & 25G

AUTUMN CHASE UNIT 2 2005 (PAR 203 - 231)  
FROM PAR 1-1-24A

LIMBERLOST FARMS

SIERRA VIEW

MAP 8

- LEGEND
- County Boundary
  - Map Boundary
  - Limit of Ownership
  - Original Platted Line
  - District Line
  - Railroad Right of Way
  - City Limit
  - Easement
  - Stream
  - Church
  - School
  - Cemetery

- NOTES:
1. PARCEL 7-1-32B OUT OF 7-1-32 FOR 2002 PER DEED 3-2-01, 1986/124 IUS 6-28-01
  2. 1.61 AC TO 7-1-14G FROM 7-1-14B DEED 2190/186 12/14/2001
  3. 7-1-8L from 7-1-8H deed 2282/81 2/28/02
  4. 7-1-24A rezoned from AR to R1 cond case # 2002/34; ordinance # 0-2003-02
  5. 7-1-25B, 25C, 25D rezoned to R1 cond case # 2003/03-04-05; ordinance # 0-2003-5, 6, 7
  6. 7-1-25E from 7-1-25 deed 2837/322 8/21/03
  7. 7-1-25C rezoned from A-R to R-1 cond case # 2003/06; ordinance # 0-2003-112
  8. 7-1-25F rezoned from A-R to R-1 cond case # 2003/07; ordinance # 0-2003-113
  9. AUTUMN CHASE UNIT 1 FROM PAR 7-1-24A, 25B, 25C, 25D, 25F & 25G FOR 2004

- LIMBERLOST FARMS unit 7 2002 (parcels 130 - 137) from parcel 7-1-23
- LIMBERLOST FARMS UNIT 6 1995 (PAR 124 - 129)
- SIERRA VIEW SUB. 1988 (PAR. 76 - 106)
- LIMBERLOST FARMS U-5 1988 (PAR. 107-123)
- LIMBERLOST FARMS 1977

TAX VALUATION MAP	Land Lot 152 - 155	MAP NO.
ROCKDALE COUNTY	186-170, 184-188	7
GEORGIA	DISTRICT 11	
	O. M. D. 1251	
DATE: DEC. 1, 1987 LAST REVISION: 2005 PHOTO NO. 85-76, 81		

LIMBERLOST FARMS UNIT 6 1995 (PAR 124 - 129) FROM PARCEL 7-1-23