

THIS MAP HAS BEEN COMPILED FROM THE MOST AUTHENTIC INFORMATION AVAILABLE, AND NEITHER ROCKDALE COUNTY NOR HURMCUTT AND ASSOCIATES, INC. ASSUME RESPONSIBILITY FOR ERRORS OR OMISSIONS

MAP 3

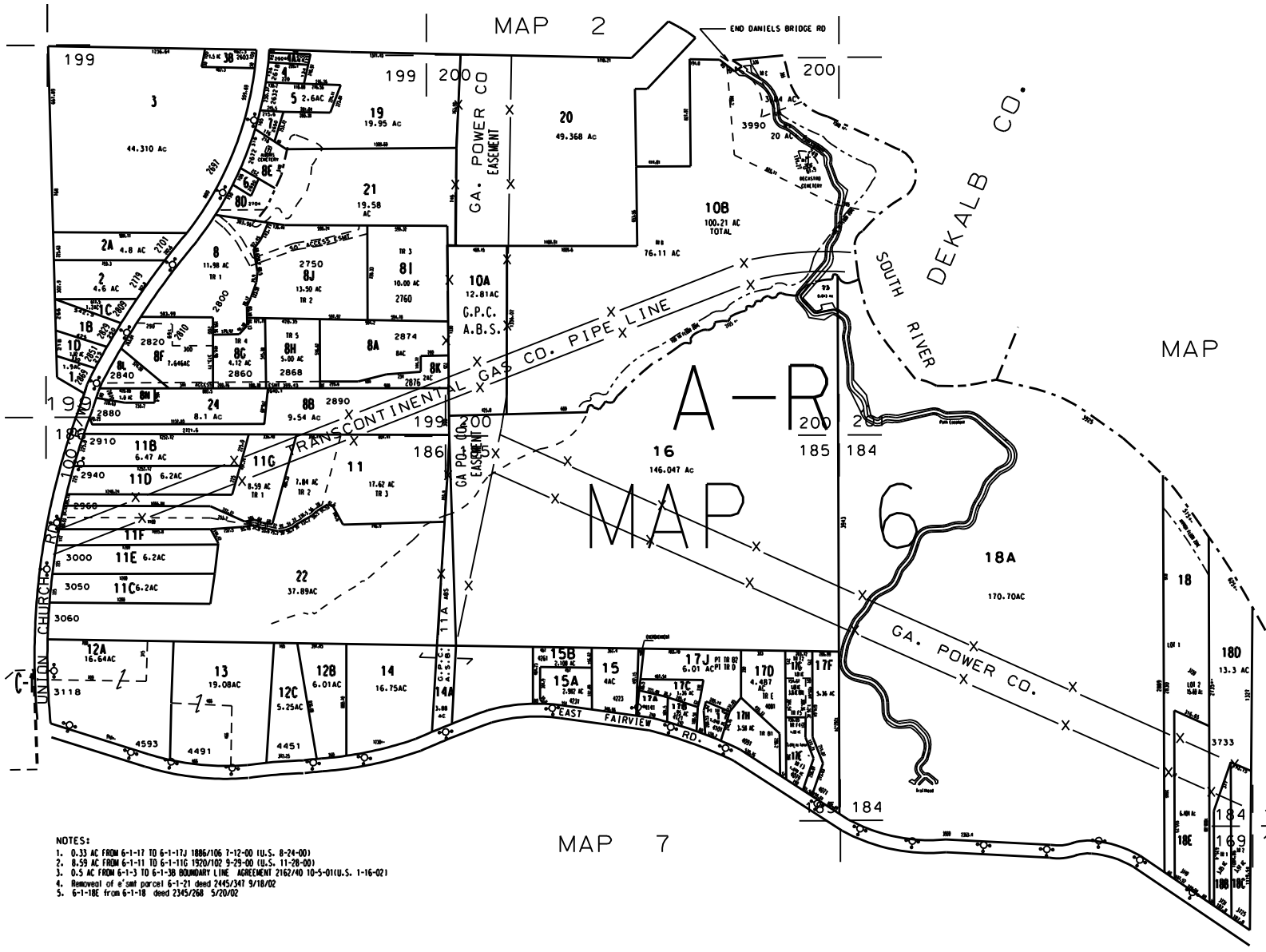
MAP 2

MAP 13

MAP 4

MAP 7

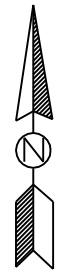
MAP 14



- NOTES:
- 0.33 AC FROM 6-1-17 TO 6-1-17J 1886/106 7-12-00 (U.S. 8-24-00)
 - 8.59 AC FROM 6-1-11 TO 6-1-11G 1920/102 9-29-00 (U.S. 11-28-00)
 - 0.5 AC FROM 6-1-3 TO 6-1-3B BOUNDARY LINE AGREEMENT 2162/40 10-5-01(U.S. 1-16-02)
 - Removal of #2nd parcel 6-1-21 deed 2445/347 3/18/02
 - 6-1-18E from 6-1-18 deed 2345/268 5/20/02

LEGEND

- County Boundary
 - Map Boundary
 - Limit of Ownership
 - Original Platted Line
 - District Line
 - Railroad Right of Way
 - City Limit
 - Easement
 - Stream
- CHURCH SCHOOL CEMETERY



TAX VALUATION MAP	LAND LOT 169 - 170	MAP NO.
ROCKDALE COUNTY	184-187 198-201	6
GEORGIA	DISTRICT 1 1	
	G. M. O. 1251	