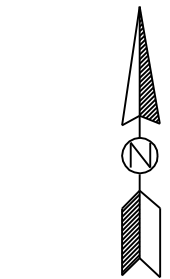
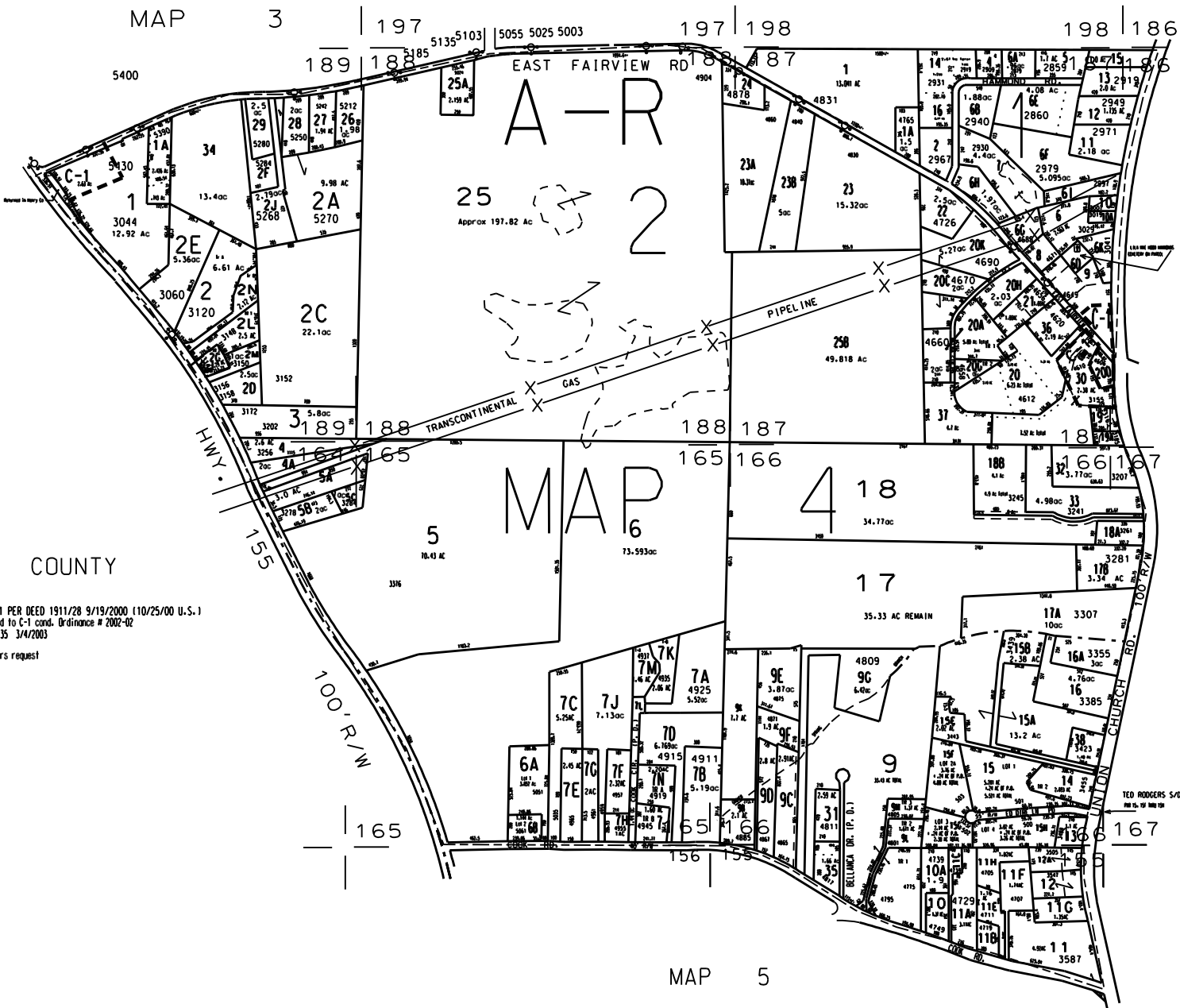


THIS MAP HAS BEEN COMPILED FROM THE MOST AUTHENTIC INFORMATION AVAILABLE, AND NEITHER ROCKDALE COUNTY NOR HERBERT AND ASSOCIATES, INC. ASSUME RESPONSIBILITY FOR ERRORS OR OMISSIONS.



MAP 6

MAP 7

MAP 5

HENRY COUNTY

NOTES:

1. PARCEL 4-2-25A OUT OF 4-2-25 FOR 2001 PER DEED 1911/28 9/19/2000 (10/25/00 U.S.)
2. .85 ac. of 4-2-30 (C-2 Cond. zoning) rezoned to C-1 cond. Ordinance # 2002-02
3. 13.40 ac. from 3-1-14C to 4-2-34. deed 2612/35 3/4/2003
4. 4-2-28 from 4-2-2 deed 3010/221 2/5/04
5. 4-2-208 combined with 4-2-30 2004 by owners request
6. 4-2-9L & 9M from 4-2-9 by plat 33/62 2005

LEGEND

- County Boundary
- Map Boundary
- Limit of Ownership
- Original Platted Line
- District Line
- Railroad Right of Way
- City Limit
- Cowman
- Stream

- CHURCH
- SCHOOL
- CEMETERY

TAX VALUATION MAP	LAND LOT 164 - 167	MAP NO.
ROCKDALE COUNTY	186 - 189	4
GEORGIA	DISTRICT 1.1	
	G.M.C. 1251	

DATE: DEC. 1, 1987, LAST REVISION 2004 PHOTO NO. 887 107, 887 107, 887 107