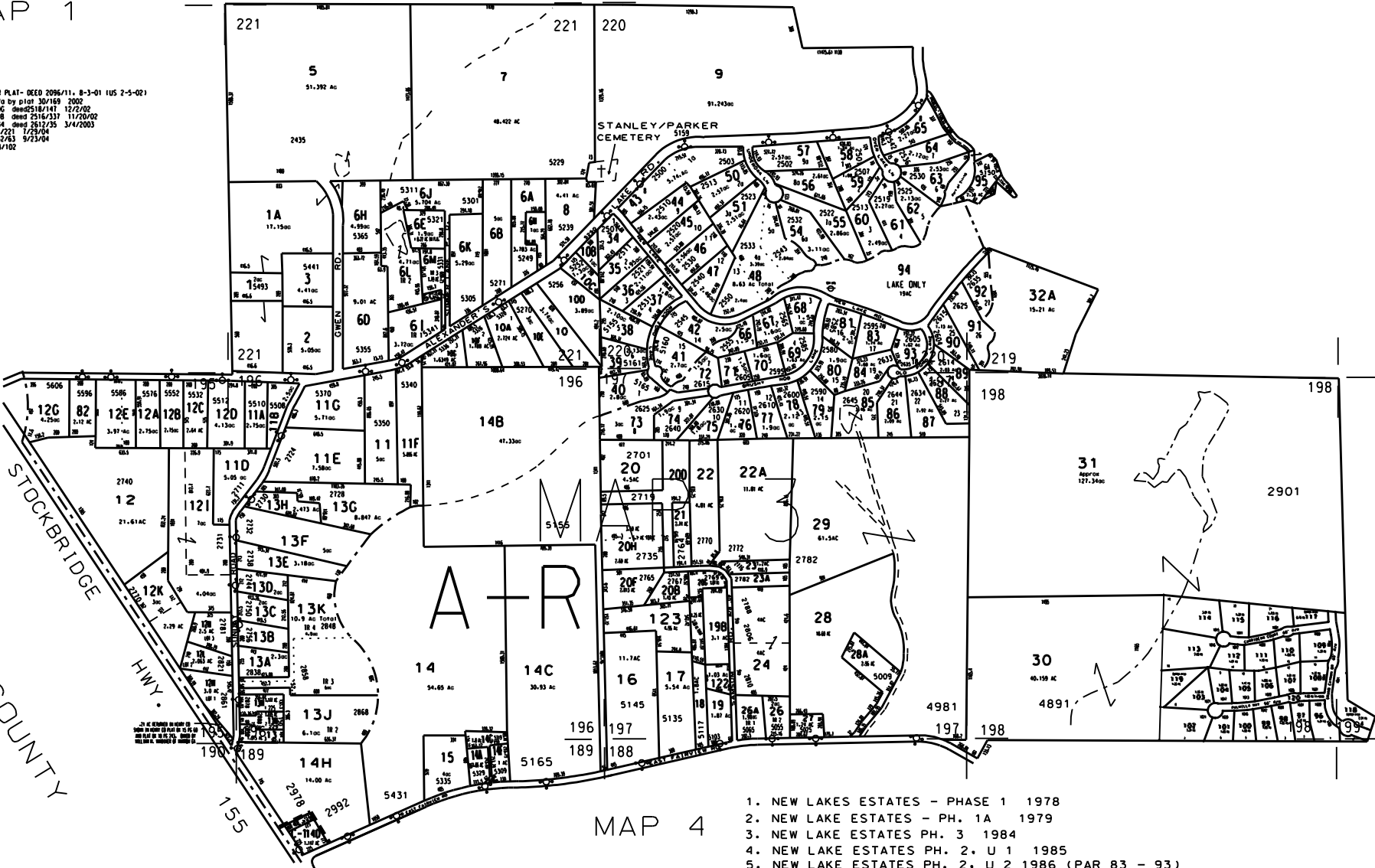
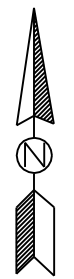


MAP 2

MAP 1

- NOTES:
1. AC CHANGE TO PARCEL 3-1-208 PER PLAT- DEED 2096/11, 8-3-01 (US 2-5-02)
 2. 11.81 ac from 3-1-22 to 3-1-22a by plat 30/169 2002
 3. 0.59 ac from 3-1-20E to 3-1-20C deed 2518/147 12/2/02
 4. 1.25 ac from 3-1-20E to 3-1-208 deed 2516/331 11/20/02
 5. 13.40 ac from 3-1-14C to 4-2-34 deed 2512/25 3/4/2003
 6. 3-1-32A from 3-1-32 deed 3178/221 7/29/04
 7. 3-1-208 from 3-1-20C deed 3232/63 9/23/04
 8. 3-1-198 from 3-1-19 deed 3683/102



MAP 4

1. NEW LAKES ESTATES - PHASE 1 1978
2. NEW LAKE ESTATES - PH. 1A 1979
3. NEW LAKE ESTATES PH. 3 1984
4. NEW LAKE ESTATES PH. 2, U 1 1985
5. NEW LAKE ESTATES PH. 2, U 2 1986 (PAR 83 - 93)
6. NEW LAKE ESTATES PH. 3, 1990 (PAR 95)
7. THE KEYS @ ST LUCIA PH 1, 2007 (PAR 96 - 119), FROM 3-1-3A
8. THE KEYS @ ST LUCIA RENAMED GRAND CAYMAN ESTATES BY PLAT 36/43-45 2008

LEGEND

- County Boundary
- Map Boundary
- Limit of Ownership
- Original Platted Line
- District Line
- Railroad Right of Way
- City Limits
- Easement
- Stream
- CHURCH
- SCHOOL
- CEMETERY

TAX VALUATION MAP	LAND LOT 195-198	MAP NO.
ROCKDALE COUNTY	219-291	3
GEORGIA	DISTRICT 11	
	D. M. O. 1251	
DATE: DEC. 1, 1987	LAST REVISION: 2004	PHOTO NO. 88 15 85 8