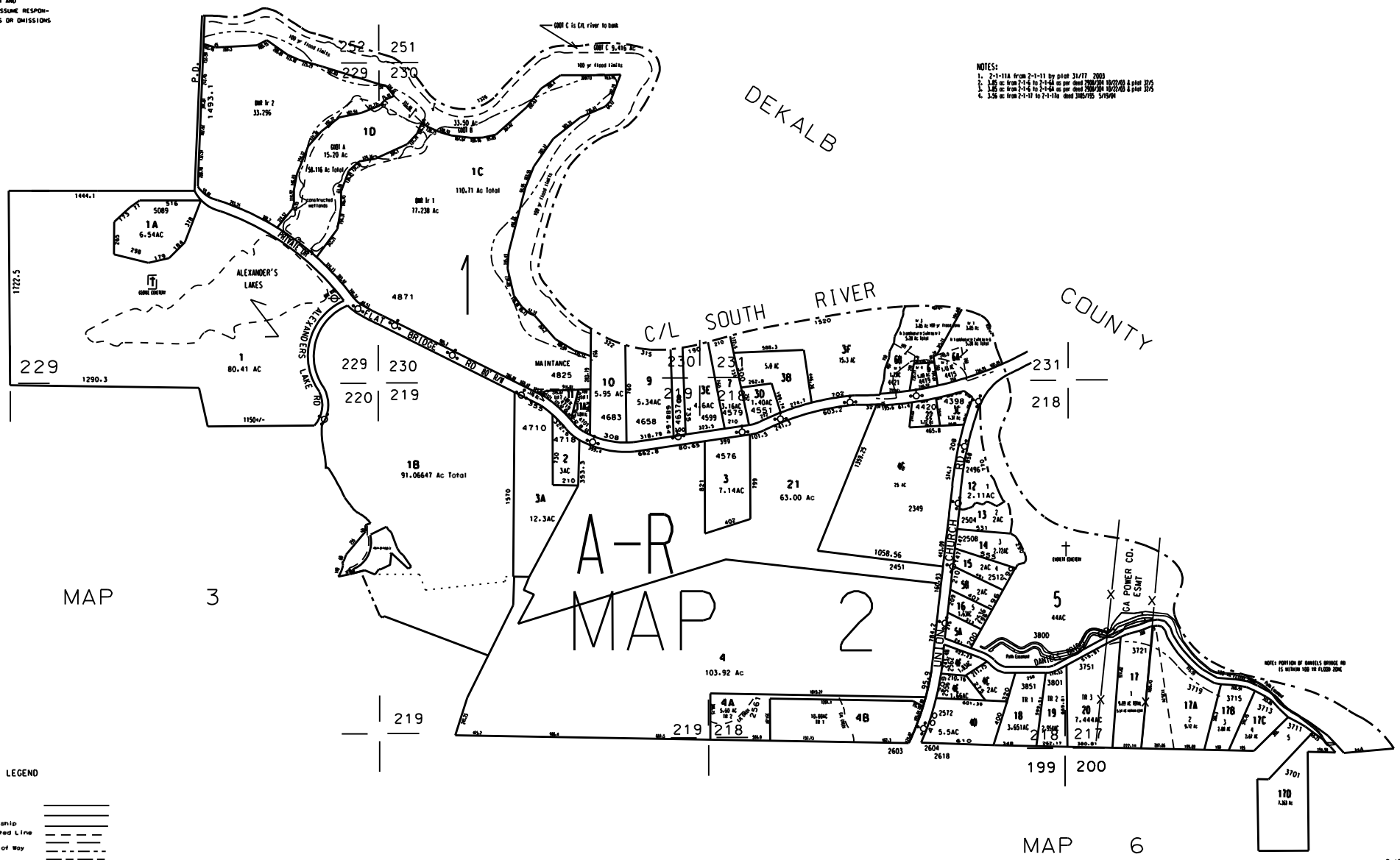


THIS MAP HAS BEEN COMPILED FROM THE MOST AUTHENTIC INFORMATION AVAILABLE, AND NEITHER ROCKDALE COUNTY NOR HUNNICUTT AND ASSOCIATES, INC. ASSUME RESPONSIBILITY FOR ERRORS OR OMISSIONS



NOTES:
 1. 7-1-18 from 2-1-11 by plat 31/7/1 2003
 2. 1-8-18 from 2-1-11 to 2-1-14 as per deed 2002/24 10/22/03 & plat 10/5
 3. 1-8-18 from 2-1-11 to 2-1-14 as per deed 2002/24 10/22/03 & plat 10/5
 4. 1-8-18 from 2-1-11 to 2-1-14 as per deed 2002/24 10/22/03 & plat 10/5



- LEGEND
- County Boundary
 - Map Boundary
 - Limit of Ownership
 - Original Platted Line
 - District Line
 - Railroad Right of Way
 - City Limit
 - Coastment
 - Stream
 - CHURCH
 - SCHOOL
 - CEMETERY

TAX VALUATION MAP		
ROCKDALE COUNTY	LAND LOT 212, 218 - 219	MAP NO. 2
GEORGIA	220, 224, 230, 231	
	DISTRICT 11	
	G. M. D. 1251	
DATE: DEC. 1, 1987	LAST REVISION: 2004	PHOTO NO.: 856 74